

Datasheet for ABIN1533436  
**anti-SENP1 antibody (AA 1-50)**



[Go to Product page](#)

2 Images

## Overview

Quantity:	100 µL
Target:	SENP1
Binding Specificity:	AA 1-50
Reactivity:	Human, Mouse
Host:	Rabbit
Clonality:	Polyclonal
Conjugate:	This SENP1 antibody is un-conjugated
Application:	Western Blotting (WB), ELISA, Immunohistochemistry (IHC)

## Product Details

Immunogen:	The antiserum was produced against synthesized peptide derived from human SENP1.
Isotype:	IgG
Specificity:	SENP1 Antibody detects endogenous levels of total SENP1 protein.
Purification:	The antibody was purified from rabbit antiserum by affinity-chromatography using immunogen.
Purity:	> 95 %

## Target Details

Target:	SENP1
Alternative Name:	SENP1 ( <a href="#">SENP1 Products</a> )
Background:	Synonyms: Sentrin-specific protease 1, Sentrin/SUMO-specific protease SENP1, SENP1

## Target Details

---

NCBI Gene Symbol: SENP1

Molecular Weight: 73 kDa

Gene ID: 29843

UniProt: [Q9P0U3](#)

Pathways: [Positive Regulation of Endopeptidase Activity](#)

## Application Details

---

Application Notes: WB: 1:500~1:1000 IHC: 1:50~1:100 ELISA: 1:10000

Comment: Unigene-Number: Hs.371957 (NCBI Gene Symbol: SENP1)

Restrictions: For Research Use only

## Handling

---

Format: Liquid

Concentration: 1 mg/mL

Buffer: phosphate buffered saline (without Mg<sup>2+</sup> and Ca<sup>2+</sup>), pH 7.4, 150 mM NaCl, 0.02 % sodium azide and 50 % glycerol.

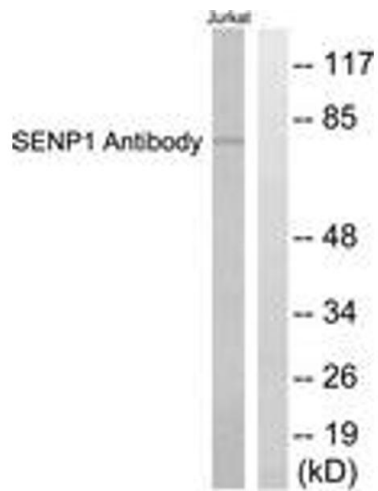
Preservative: Sodium azide

Precaution of Use: This product contains sodium azide: a POISONOUS AND HAZARDOUS SUBSTANCE which should be handled by trained staff only.

Storage: -20 °C

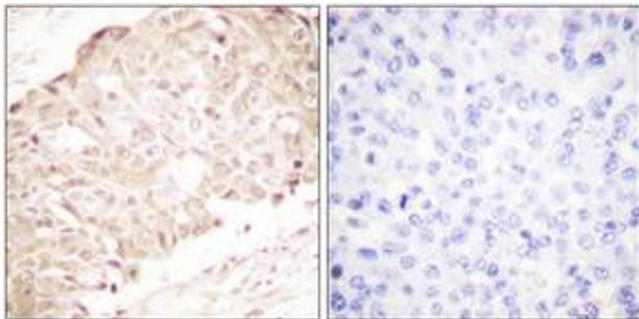
Storage Comment: Stable at -20°C for at least 1 year.

Expiry Date: 12 months



### Western Blotting

**Image 1.** Western blot analysis of extracts from Jurkat cells, using SENP1 Antibody. The lane on the right is treated with the synthesized peptide.



### Immunohistochemistry

**Image 2.** Immunohistochemistry analysis of paraffin-embedded human breast carcinoma tissue, using SENP1 Antibody. The picture on the right is treated with the synthesized peptide.