



Datasheet for ABIN1533439
anti-SEN5 antibody (AA 651-700)



[Go to Product page](#)

2 Images

Overview

Quantity:	100 µg
Target:	SEN5
Binding Specificity:	AA 651-700
Reactivity:	Human, Mouse
Host:	Rabbit
Clonality:	Polyclonal
Conjugate:	This SEN5 antibody is un-conjugated
Application:	Western Blotting (WB), ELISA, Immunohistochemistry (IHC)

Product Details

Immunogen:	The antiserum was produced against synthesized peptide derived from human SEN5.
Isotype:	IgG
Specificity:	SEN5 Antibody detects endogenous levels of total SEN5 protein.
Purification:	The antibody was purified from rabbit antiserum by affinity-chromatography using immunogen.
Purity:	> 95 %

Target Details

Target:	SEN5
Alternative Name:	SEN5 (SEN5 Products)
Background:	Synonyms: Sentrin-specific protease 5, Sentrin/SUMO-specific protease SEN5, FKSG45

Target Details

NCBI Gene Symbol: SENP5

Molecular Weight: 86 kDa

Gene ID: 205564

OMIM: 612845

UniProt: [Q96H10](#)

Application Details

Application Notes: WB: 1:500~1:1000 IHC: 1:50~1:100 ELISA: 1:20000

Comment: Unigene-Number: Hs.240770 (NCBI Gene Symbol: SENP5)

Restrictions: For Research Use only

Handling

Format: Liquid

Concentration: 1 mg/mL

Buffer: phosphate buffered saline (without Mg²⁺ and Ca²⁺), pH 7.4, 150 mM NaCl, 0.02 % sodium azide and 50 % glycerol.

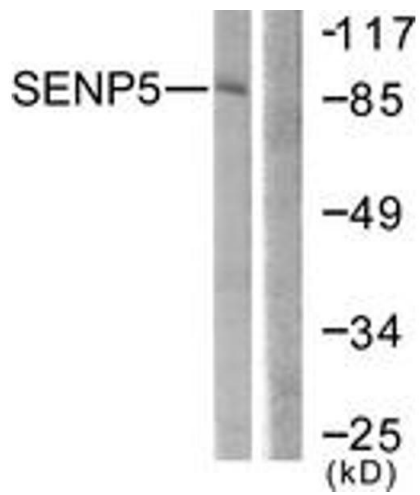
Preservative: Sodium azide

Precaution of Use: This product contains sodium azide: a POISONOUS AND HAZARDOUS SUBSTANCE which should be handled by trained staff only.

Storage: -20 °C

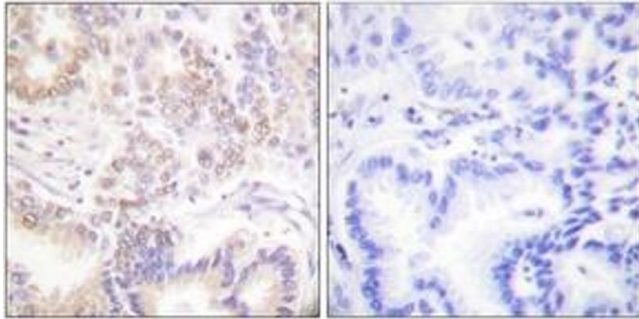
Storage Comment: Stable at -20°C for at least 1 year.

Expiry Date: 12 months



Western Blotting

Image 1. Western blot analysis of extracts from COS7 cells, using SENP5 Antibody. The lane on the right is treated with the synthesized peptide.



Immunohistochemistry

Image 2. Immunohistochemistry analysis of paraffin-embedded human lung carcinoma tissue, using SENP5 Antibody. The picture on the right is treated with the synthesized peptide.