

Datasheet for ABIN1533447  
**anti-TRADD antibody (AA 251-300)**



[Go to Product page](#)

2 Images

## Overview

Quantity:	100 µL
Target:	TRADD
Binding Specificity:	AA 251-300
Reactivity:	Human, Mouse
Host:	Rabbit
Clonality:	Polyclonal
Conjugate:	This TRADD antibody is un-conjugated
Application:	Western Blotting (WB), Immunohistochemistry (IHC), ELISA

## Product Details

Immunogen:	The antiserum was produced against synthesized peptide derived from human TRADD.
Isotype:	IgG
Specificity:	TRADD Antibody detects endogenous levels of total TRADD protein.
Purification:	The antibody was purified from rabbit antiserum by affinity-chromatography using immunogen.
Purity:	> 95 %

## Target Details

Target:	TRADD
Alternative Name:	TRADD ( <a href="#">TRADD Products</a> )
Background:	Synonyms: Tumor necrosis factor receptor type 1-associated DEATH domain protein, TNFR1-

## Target Details

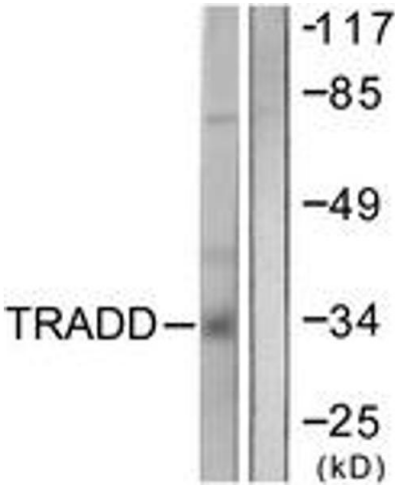
	associated DEATH domain protein, TNFRSF1A-associated via death domain, TRADD NCBI Gene Symbol: TRADD
Molecular Weight:	34 kDa
Gene ID:	8717
OMIM:	603500
UniProt:	<a href="#">Q15628</a>
Pathways:	<a href="#">NF-kappaB Signaling</a> , <a href="#">Apoptosis</a> , <a href="#">Caspase Cascade in Apoptosis</a> , <a href="#">Positive Regulation of Endopeptidase Activity</a> , <a href="#">Hepatitis C</a>

## Application Details

Application Notes:	WB: 1:500~1:1000 IHC: 1:50~1:100 ELISA: 1:5000
Comment:	Unigene-Number: Hs.460996 (NCBI Gene Symbol: TRADD)
Restrictions:	For Research Use only

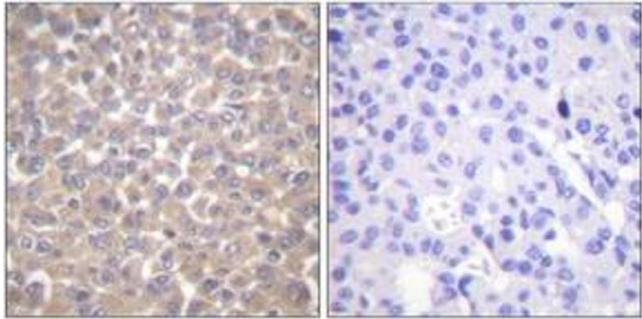
## Handling

Format:	Liquid
Concentration:	1 mg/mL
Buffer:	phosphate buffered saline (without Mg <sup>2+</sup> and Ca <sup>2+</sup> ), pH 7.4, 150 mM NaCl, 0.02 % sodium azide and 50 % glycerol.
Preservative:	Sodium azide
Precaution of Use:	This product contains sodium azide: a POISONOUS AND HAZARDOUS SUBSTANCE which should be handled by trained staff only.
Storage:	-20 °C
Storage Comment:	Stable at -20°C for at least 1 year.
Expiry Date:	12 months



#### Western Blotting

**Image 1.** Western blot analysis of extracts from COS7 cells, using TRADD Antibody. The lane on the right is treated with the synthesized peptide.



#### Immunohistochemistry

**Image 2.** Immunohistochemistry analysis of paraffin-embedded human breast carcinoma tissue, using TRADD Antibody. The picture on the right is treated with the synthesized peptide.