

Datasheet for ABIN1533454
anti-UBA7 antibody (AA 963-1012)[Go to Product page](#)

2 Images

Overview

| | |
|----------------------|--|
| Quantity: | 100 µg |
| Target: | UBA7 |
| Binding Specificity: | AA 963-1012 |
| Reactivity: | Human |
| Host: | Rabbit |
| Clonality: | Polyclonal |
| Conjugate: | This UBA7 antibody is un-conjugated |
| Application: | Western Blotting (WB), ELISA, Immunohistochemistry (IHC) |

Product Details

| | |
|---------------|---|
| Immunogen: | The antiserum was produced against synthesized peptide derived from human UBE1L. |
| Isotype: | IgG |
| Specificity: | UBE1L Antibody detects endogenous levels of total UBE1L protein. |
| Purification: | The antibody was purified from rabbit antiserum by affinity-chromatography using immunogen. |
| Purity: | > 95 % |

Target Details

| | |
|-------------------|--|
| Target: | UBA7 |
| Alternative Name: | UBE1L (UBA7 Products) |
| Background: | Synonyms: Ubiquitin-like modifier-activating enzyme 7, Ubiquitin-activating enzyme 7, Ubiquitin- |

Target Details

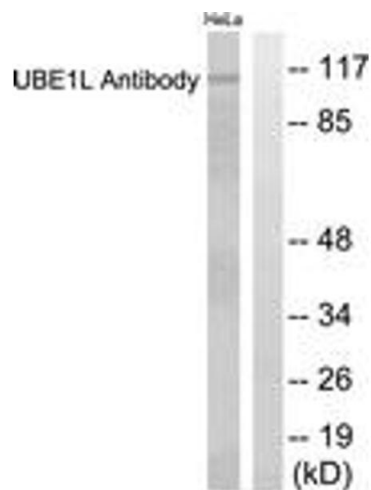
| | |
|-------------------|---|
| | activating enzyme E1 homolog, D8, UBA7, UBE1L, UBE2 NCBI Gene Symbol: UBA7 |
| Molecular Weight: | 111 kDa |
| Gene ID: | 7318 |
| OMIM: | 191325 |
| UniProt: | P41226 |

Application Details

| | |
|--------------------|---|
| Application Notes: | WB: 1:500~1:1000 IHC: 1:50~1:100 ELISA: 1:10000 |
| Comment: | Unigene-Number: Hs.16695 (NCBI Gene Symbol: UBA7) |
| Restrictions: | For Research Use only |

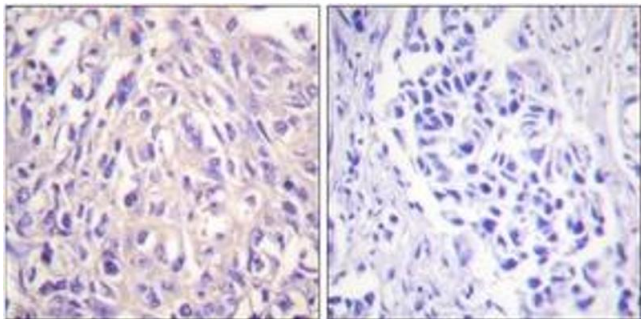
Handling

| | |
|--------------------|---|
| Format: | Liquid |
| Concentration: | 1 mg/mL |
| Buffer: | phosphate buffered saline (without Mg ²⁺ and Ca ²⁺), pH 7.4, 150 mM NaCl, 0.02 % sodium azide and 50 % glycerol. |
| Preservative: | Sodium azide |
| Precaution of Use: | This product contains sodium azide: a POISONOUS AND HAZARDOUS SUBSTANCE which should be handled by trained staff only. |
| Storage: | -20 °C |
| Storage Comment: | Stable at -20°C for at least 1 year. |
| Expiry Date: | 12 months |



Western Blotting

Image 1. Western blot analysis of extracts from HeLa cells, using UBE1L Antibody. The lane on the right is treated with the synthesized peptide.



Immunohistochemistry

Image 2. Immunohistochemistry analysis of paraffin-embedded human breast carcinoma tissue, using UBE1L Antibody. The picture on the right is treated with the synthesized peptide.