

Datasheet for ABIN1533457
anti-USF2 antibody (AA 196-245)

2 Images

[Go to Product page](#)

Overview

Quantity:	100 µg
Target:	USF2
Binding Specificity:	AA 196-245
Reactivity:	Human, Mouse, Rat
Host:	Rabbit
Clonality:	Polyclonal
Conjugate:	This USF2 antibody is un-conjugated
Application:	Western Blotting (WB), ELISA, Immunohistochemistry (IHC)

Product Details

Immunogen:	The antiserum was produced against synthesized peptide derived from human USF2.
Isotype:	IgG
Specificity:	USF2 Antibody detects endogenous levels of total USF2 protein.
Purification:	The antibody was purified from rabbit antiserum by affinity-chromatography using immunogen.
Purity:	> 95 %

Target Details

Target:	USF2
Alternative Name:	USF2 (USF2 Products)
Background:	Synonyms: Upstream stimulatory factor 2, Upstream transcription factor 2, FOS-interacting

Target Details

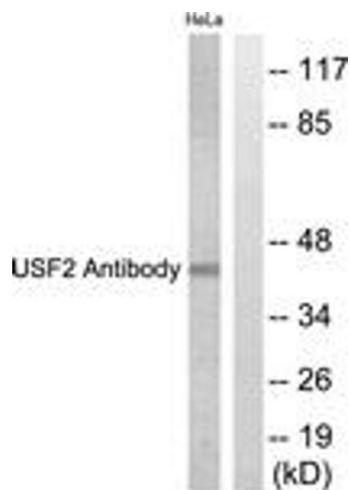
	protein, FIP, Major late transcription factor 2 NCBI Gene Symbol: USF2
Molecular Weight:	36 kDa
Gene ID:	7392
OMIM:	600390
UniProt:	Q15853

Application Details

Application Notes:	WB: 1:500~1:1000 IHC: 1:50~1:100 ELISA: 1:20000
Comment:	Unigene-Number: Hs.454534 (NCBI Gene Symbol: USF2)
Restrictions:	For Research Use only

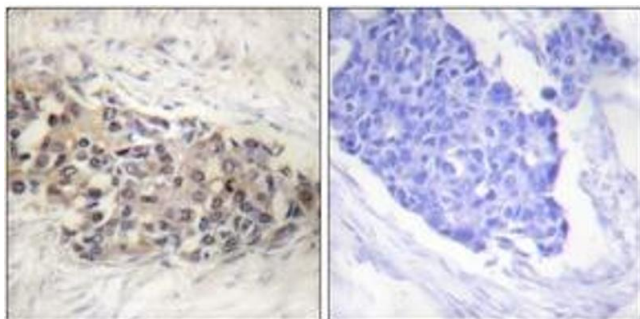
Handling

Format:	Liquid
Concentration:	1 mg/mL
Buffer:	phosphate buffered saline (without Mg ²⁺ and Ca ²⁺), pH 7.4, 150 mM NaCl, 0.02 % sodium azide and 50 % glycerol.
Preservative:	Sodium azide
Precaution of Use:	This product contains sodium azide: a POISONOUS AND HAZARDOUS SUBSTANCE which should be handled by trained staff only.
Storage:	-20 °C
Storage Comment:	Stable at -20°C for at least 1 year.
Expiry Date:	12 months



Western Blotting

Image 1. Western blot analysis of extracts from HeLa cells, using USF2 Antibody. The lane on the right is treated with the synthesized peptide.



Immunohistochemistry

Image 2. Immunohistochemistry analysis of paraffin-embedded human breast carcinoma tissue, using USF2 Antibody. The picture on the right is treated with the synthesized peptide.