

Datasheet for ABIN1533464
anti-RCC1 antibody (AA 517-566)[Go to Product page](#)

2 Images

Overview

Quantity:	100 µg
Target:	RCC1
Binding Specificity:	AA 517-566
Reactivity:	Human, Mouse, Rat
Host:	Rabbit
Clonality:	Polyclonal
Conjugate:	This RCC1 antibody is un-conjugated
Application:	Western Blotting (WB), Immunohistochemistry (IHC), ELISA

Product Details

Immunogen:	The antiserum was produced against synthesized peptide derived from human XRCC1.
Isotype:	IgG
Specificity:	XRCC1 Antibody detects endogenous levels of total XRCC1 protein.
Purification:	The antibody was purified from rabbit antiserum by affinity-chromatography using immunogen.
Purity:	> 95 %

Target Details

Target:	RCC1
Alternative Name:	RCC1 (RCC1 Products)
Background:	Synonyms: DNA repair protein XRCC1, X-ray repair cross-complementing protein 1

Target Details

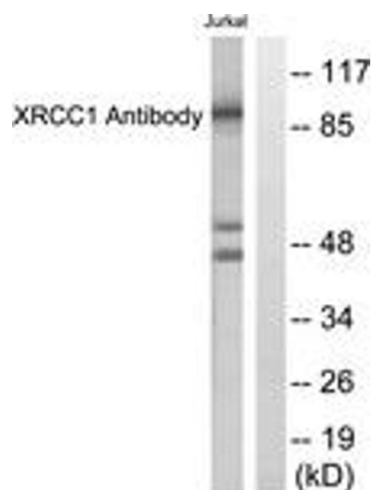
	NCBI Gene Symbol: XRCC1
Molecular Weight:	69 kDa
Gene ID:	7515
OMIM:	194360
UniProt:	P18887
Pathways:	Chromatin Binding , Protein targeting to Nucleus

Application Details

Application Notes:	WB: 1:500~1:1000 IHC: 1:50~1:100 ELISA: 1:10000
Comment:	Unigene-Number: Hs.98493 (NCBI Gene Symbol: XRCC1)
Restrictions:	For Research Use only

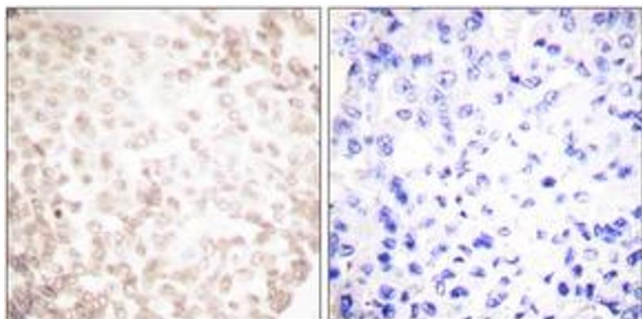
Handling

Format:	Liquid
Concentration:	1 mg/mL
Buffer:	phosphate buffered saline (without Mg ²⁺ and Ca ²⁺), pH 7.4, 150 mM NaCl, 0.02 % sodium azide and 50 % glycerol.
Preservative:	Sodium azide
Precaution of Use:	This product contains sodium azide: a POISONOUS AND HAZARDOUS SUBSTANCE which should be handled by trained staff only.
Storage:	-20 °C
Storage Comment:	Stable at -20°C for at least 1 year.
Expiry Date:	12 months



Western Blotting

Image 1. Western blot analysis of extracts from Jurkat cells, using XRCC1 Antibody. The lane on the right is treated with the synthesized peptide.



Immunohistochemistry

Image 2. Immunohistochemistry analysis of paraffin-embedded human lung carcinoma tissue, using XRCC1 Antibody. The picture on the right is treated with the synthesized peptide.