

Datasheet for ABIN1533472

**anti-NK6 Homeobox 3 antibody (AA 161-210)****2** Images[Go to Product page](#)

## Overview

Quantity:	100 µg
Target:	NK6 Homeobox 3 (NKX6-3)
Binding Specificity:	AA 161-210
Reactivity:	Human, Mouse
Host:	Rabbit
Clonality:	Polyclonal
Conjugate:	This NK6 Homeobox 3 antibody is un-conjugated
Application:	Western Blotting (WB), ELISA, Immunofluorescence (IF)

## Product Details

Immunogen:	The antiserum was produced against synthesized peptide derived from human NKX6.3.
Isotype:	IgG
Specificity:	NKX6.3 Antibody detects endogenous levels of total NKX6.3 protein.
Purification:	The antibody was purified from rabbit antiserum by affinity-chromatography using immunogen.
Purity:	> 95 %

## Target Details

Target:	NK6 Homeobox 3 (NKX6-3)
Alternative Name:	NKX6.3 ( <a href="#">NKX6-3 Products</a> )
Background:	Synonyms: Homeobox protein Nkx-6.3, NKX6-3

## Target Details

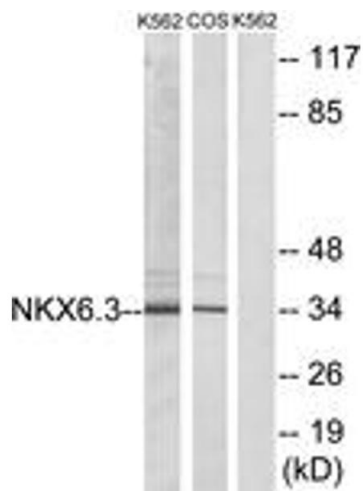
	NCBI Gene Symbol: NKX6-3
Molecular Weight:	28 kDa
Gene ID:	157848
OMIM:	610772
UniProt:	<a href="#">A6NJ46</a>

## Application Details

Application Notes:	WB: 1:500~1:1000 IF: 1:100~1:500 ELISA: 1:5000
Comment:	Unigene-Number: Hs.647132 (NCBI Gene Symbol: NKX6-3)
Restrictions:	For Research Use only

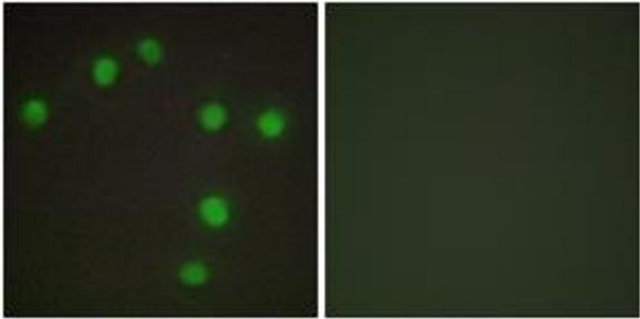
## Handling

Format:	Liquid
Concentration:	1 mg/mL
Buffer:	phosphate buffered saline (without Mg <sup>2+</sup> and Ca <sup>2+</sup> ), pH 7.4, 150 mM NaCl, 0.02 % sodium azide and 50 % glycerol.
Preservative:	Sodium azide
Precaution of Use:	This product contains sodium azide: a POISONOUS AND HAZARDOUS SUBSTANCE which should be handled by trained staff only.
Storage:	-20 °C
Storage Comment:	Stable at -20°C for at least 1 year.
Expiry Date:	12 months



Western Blotting

**Image 1.** Western blot analysis of extracts from K562/COS7 cells, using NKX6.3 Antibody. The lane on the right is treated with the synthesized peptide.



Immunofluorescence

**Image 2.** Immunofluorescence analysis of HuvEc cells, using NKX6.3 Antibody. The picture on the right is treated with the synthesized peptide.