



[Go to Product page](#)

Datasheet for ABIN1533473
anti-PDLIM1 antibody (AA 61-110)

3 Images

Overview

Quantity:	100 µg
Target:	PDLIM1
Binding Specificity:	AA 61-110
Reactivity:	Human, Mouse, Rat
Host:	Rabbit
Clonality:	Polyclonal
Conjugate:	This PDLIM1 antibody is un-conjugated
Application:	Western Blotting (WB), ELISA, Immunohistochemistry (IHC), Immunofluorescence (IF)

Product Details

Immunogen:	The antiserum was produced against synthesized peptide derived from human PDLIM1.
Isotype:	IgG
Specificity:	PDLIM1 Antibody detects endogenous levels of total PDLIM1 protein.
Purification:	The antibody was purified from rabbit antiserum by affinity-chromatography using immunogen.
Purity:	> 95 %

Target Details

Target:	PDLIM1
Alternative Name:	PDLIM1 (PDLIM1 Products)
Background:	Synonyms: C-terminal LIM domain protein 1, CLP36, Elfin, LIM domain protein CLP-36, PDL1,

Target Details

PDL1, PDLIM1, PDZ and LIM domain protein 1

NCBI Gene Symbol: PDLIM1

Molecular Weight: 36 kDa

Gene ID: 9124

OMIM: 605900

UniProt: [O00151](#)

Application Details

Application Notes: WB: 1:500~1:1000 IHC: 1:50~1:100 IF: 1:100~1:500 ELISA: 1:5000

Comment: Unigene-Number: Hs.368525 (NCBI Gene Symbol: PDLIM1)

Restrictions: For Research Use only

Handling

Format: Liquid

Concentration: 1 mg/mL

Buffer: phosphate buffered saline (without Mg²⁺ and Ca²⁺), pH 7.4, 150 mM NaCl, 0.02 % sodium azide and 50 % glycerol.

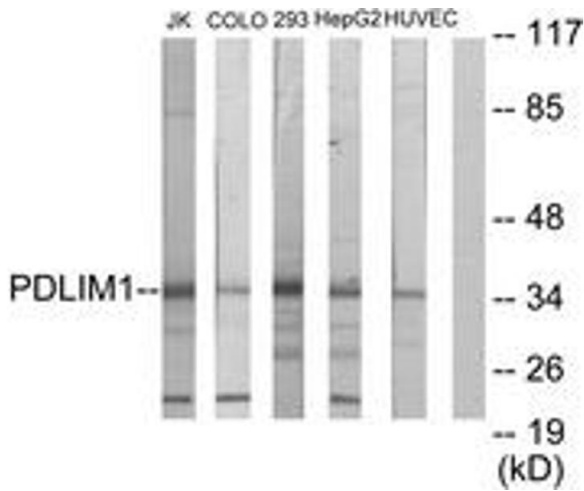
Preservative: Sodium azide

Precaution of Use: This product contains sodium azide: a POISONOUS AND HAZARDOUS SUBSTANCE which should be handled by trained staff only.

Storage: -20 °C

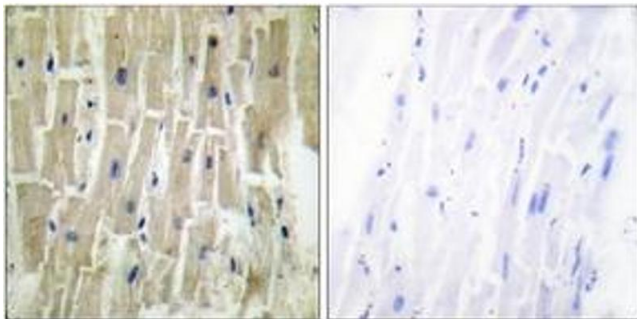
Storage Comment: Stable at -20°C for at least 1 year.

Expiry Date: 12 months



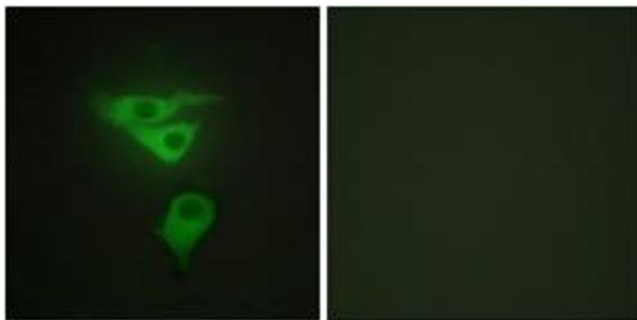
Western Blotting

Image 1. Western blot analysis of extracts from Jurkat/COLO205/293/HepG2/HuvEc cells, using PDLIM1 Antibody. The lane on the right is treated with the synthesized peptide.



Immunohistochemistry

Image 2. Immunohistochemistry analysis of paraffin-embedded human heart tissue, using PDLIM1 Antibody. The picture on the right is treated with the synthesized peptide.



Immunofluorescence

Image 3. Immunofluorescence analysis of HepG2 cells, using PDLIM1 Antibody. The picture on the right is treated with the synthesized peptide.