



[Go to Product page](#)

Datasheet for ABIN1533478  
**anti-TTF2 antibody (AA 10-59)**

1 Image

Overview

Quantity:	100 µL
Target:	TTF2
Binding Specificity:	AA 10-59
Reactivity:	Human, Mouse, Rat
Host:	Rabbit
Clonality:	Polyclonal
Conjugate:	This TTF2 antibody is un-conjugated
Application:	Western Blotting (WB), ELISA

Product Details

Immunogen:	The antiserum was produced against synthesized peptide derived from human TTF2.
Isotype:	IgG
Specificity:	TTF2 Antibody detects endogenous levels of total TTF2 protein.
Purification:	The antibody was purified from rabbit antiserum by affinity-chromatography using immunogen.
Purity:	> 95 %

Target Details

Target:	TTF2
Alternative Name:	TTF2 ( <a href="#">TTF2 Products</a> )
Background:	Synonyms: forkhead box protein E1, forkhead box protein E2, forkhead-related protein FKHL15,

## Target Details

---

HFKH4, HFKL5, HNF-3/fork head-like protein 5, thyroid transcription factor 2, TTF-2  
NCBI Gene Symbol: FOXE1

Molecular Weight: 38 kDa

Gene ID: 2304

OMIM: 602617

UniProt: [O00358](#)

Pathways: [Thyroid Hormone Synthesis](#)

## Application Details

---

Application Notes: WB: 1:500~1:1000 ELISA: 1:10000

Comment: Unigene-Number: Hs.159234 (NCBI Gene Symbol: FOXE1)

Restrictions: For Research Use only

## Handling

---

Format: Liquid

Concentration: 1 mg/mL

Buffer: phosphate buffered saline (without Mg<sup>2+</sup> and Ca<sup>2+</sup>), pH 7.4, 150 mM NaCl, 0.02 % sodium azide and 50 % glycerol.

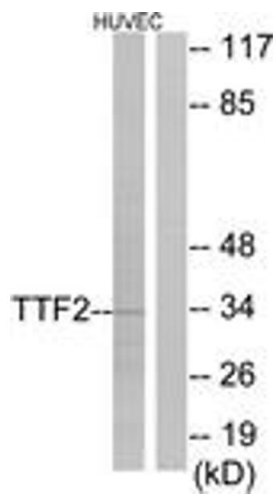
Preservative: Sodium azide

Precaution of Use: This product contains sodium azide: a POISONOUS AND HAZARDOUS SUBSTANCE which should be handled by trained staff only.

Storage: -20 °C

Storage Comment: Stable at -20°C for at least 1 year.

Expiry Date: 12 months



### Western Blotting

**Image 1.** Western blot analysis of extracts from HuvEc cells, using TTF2 Antibody. The lane on the right is treated with the synthesized peptide.