



Datasheet for ABIN1533488
anti-BACH1 antibody (AA 131-180)



[Go to Product page](#)

2 Images

Overview

Quantity:	100 µg
Target:	BACH1
Binding Specificity:	AA 131-180
Reactivity:	Human
Host:	Rabbit
Clonality:	Polyclonal
Conjugate:	This BACH1 antibody is un-conjugated
Application:	Western Blotting (WB), ELISA, Immunofluorescence (IF)

Product Details

Immunogen:	The antiserum was produced against synthesized peptide derived from human BACH1.
Isotype:	IgG
Specificity:	BACH1 Antibody detects endogenous levels of total BACH1 protein.
Purification:	The antibody was purified from rabbit antiserum by affinity-chromatography using immunogen.
Purity:	> 95 %

Target Details

Target:	BACH1
Alternative Name:	BACH1 (BACH1 Products)
Background:	Synonyms: BAC1, BTB and CNC homolog 1, HA2303, Transcription regulator protein BACH1,

Target Details

NCBI Gene Symbol: BACH1

Molecular Weight: 81 kDa

Gene ID: 571

OMIM: 602751

UniProt: [O14867](#)

Application Details

Application Notes: WB: 1:500~1:1000 IF: 1:100~1:500 ELISA: 1:20000

Comment: Unigene-Number: Hs.154276, Hs.721915 (NCBI Gene Symbol: BACH1)

Restrictions: For Research Use only

Handling

Format: Liquid

Concentration: 1 mg/mL

Buffer: phosphate buffered saline (without Mg²⁺ and Ca²⁺), pH 7.4, 150 mM NaCl, 0.02 % sodium azide and 50 % glycerol.

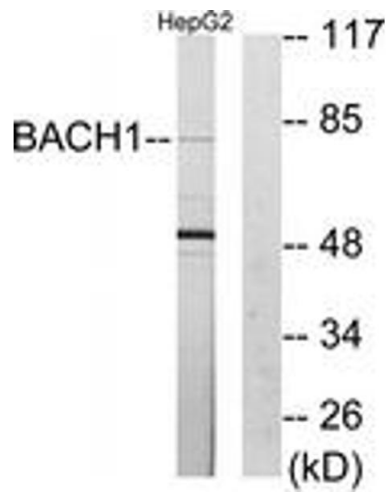
Preservative: Sodium azide

Precaution of Use: This product contains sodium azide: a POISONOUS AND HAZARDOUS SUBSTANCE which should be handled by trained staff only.

Storage: -20 °C

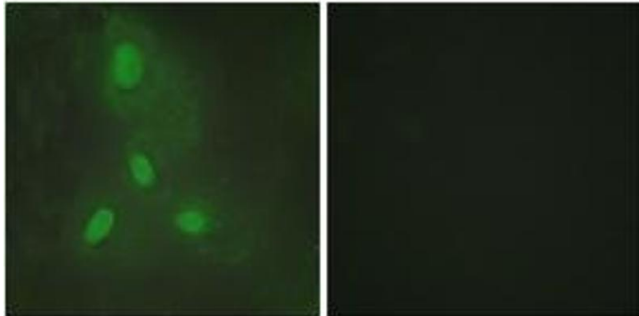
Storage Comment: Stable at -20°C for at least 1 year.

Expiry Date: 12 months



Western Blotting

Image 1. Western blot analysis of extracts from HepG2 cells, using BACH1 Antibody. The lane on the right is treated with the synthesized peptide.



Immunofluorescence

Image 2. Immunofluorescence analysis of HeLa cells, using BACH1 Antibody. The picture on the right is treated with the synthesized peptide.