



[Go to Product page](#)

Datasheet for ABIN1533497
anti-MID1 antibody (AA 71-120)

3 Images

Overview

| | |
|----------------------|---|
| Quantity: | 100 µg |
| Target: | MID1 |
| Binding Specificity: | AA 71-120 |
| Reactivity: | Human, Mouse, Rat |
| Host: | Rabbit |
| Clonality: | Polyclonal |
| Conjugate: | This MID1 antibody is un-conjugated |
| Application: | Western Blotting (WB), ELISA, Immunohistochemistry (IHC), Immunofluorescence (IF) |

Product Details

| | |
|---------------|---|
| Immunogen: | The antiserum was produced against synthesized peptide derived from human TRI18. |
| Isotype: | IgG |
| Specificity: | TRI18 Antibody detects endogenous levels of total TRI18 protein. |
| Purification: | The antibody was purified from rabbit antiserum by affinity-chromatography using immunogen. |
| Purity: | > 95 % |

Target Details

| | |
|-------------|--|
| Target: | MID1 |
| Abstract: | MID1 Products |
| Background: | Synonyms: Midline-1, Tripartite motif-containing protein 18, Putative transcription factor XPRF, |

Target Details

Midin, RING finger protein 59, Midline 1 RING finger protein, MID1, FXY, RNF59, TRIM18, XPRF
NCBI Gene Symbol: MID1

Molecular Weight: 75 kDa

Gene ID: 4281

OMIM: 300000

UniProt: [O15344](#)

Application Details

Application Notes: WB: 1:500~1:1000 IHC: 1:50~1:100 IF: 1:100~1:500 ELISA: 1:40000

Comment: Unigene-Number: Hs.27695 (NCBI Gene Symbol: MID1)

Restrictions: For Research Use only

Handling

Format: Liquid

Concentration: 1 mg/mL

Buffer: phosphate buffered saline (without Mg²⁺ and Ca²⁺), pH 7.4, 150 mM NaCl, 0.02 % sodium azide and 50 % glycerol.

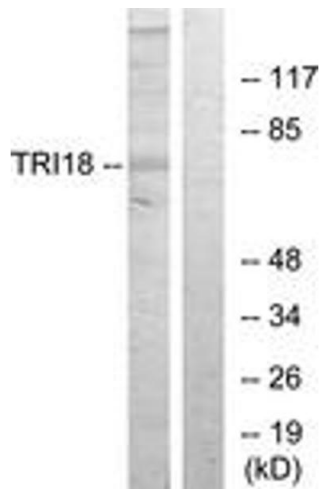
Preservative: Sodium azide

Precaution of Use: This product contains sodium azide: a POISONOUS AND HAZARDOUS SUBSTANCE which should be handled by trained staff only.

Storage: -20 °C

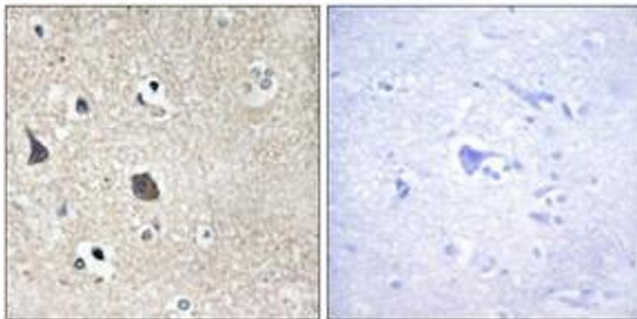
Storage Comment: Stable at -20°C for at least 1 year.

Expiry Date: 12 months



Western Blotting

Image 1. Western blot analysis of extracts from 293 cells, using TRI18 Antibody. The lane on the right is treated with the synthesized peptide.



Immunohistochemistry

Image 2. Immunohistochemistry analysis of paraffin-embedded human brain tissue, using TRI18 Antibody. The picture on the right is treated with the synthesized peptide.



Immunofluorescence

Image 3. Immunofluorescence analysis of HeLa cells, using TRI18 Antibody. The picture on the right is treated with the synthesized peptide.