

Datasheet for ABIN1533501
anti-CLOCK antibody (AA 241-290)[Go to Product page](#)

2 Images

Overview

Quantity:	100 µg
Target:	CLOCK
Binding Specificity:	AA 241-290
Reactivity:	Human, Mouse, Rat
Host:	Rabbit
Clonality:	Polyclonal
Conjugate:	This CLOCK antibody is un-conjugated
Application:	Western Blotting (WB), ELISA, Immunohistochemistry (IHC)

Product Details

Immunogen:	The antiserum was produced against synthesized peptide derived from human Clock.
Isotype:	IgG
Specificity:	Clock Antibody detects endogenous levels of total Clock protein.
Purification:	The antibody was purified from rabbit antiserum by affinity-chromatography using immunogen.
Purity:	> 95 %

Target Details

Target:	CLOCK
Alternative Name:	Clock (CLOCK Products)
Background:	Synonyms: circadian locomotor output cycles kaput, hCLOCK, KIAA0334

Target Details

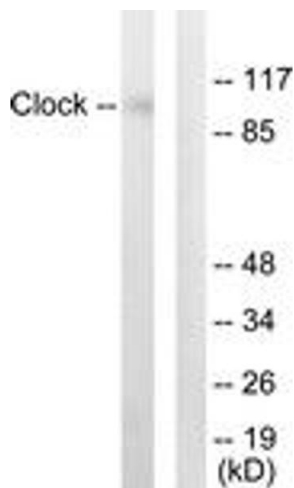
	NCBI Gene Symbol: CLOCK
Molecular Weight:	95 kDa
Gene ID:	9575
OMIM:	601851
UniProt:	O15516
Pathways:	Regulation of Lipid Metabolism by PPARalpha , Photoperiodism

Application Details

Application Notes:	WB: 1:500~1:1000 IHC: 1:50~1:100 ELISA: 1:20000
Comment:	Unigene-Number: Hs.436975 (NCBI Gene Symbol: CLOCK)
Restrictions:	For Research Use only

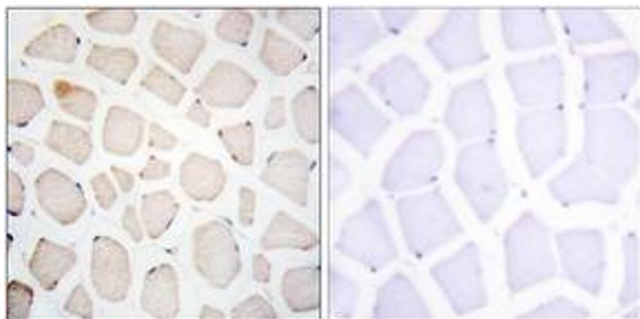
Handling

Format:	Liquid
Concentration:	1 mg/mL
Buffer:	phosphate buffered saline (without Mg ²⁺ and Ca ²⁺), pH 7.4, 150 mM NaCl, 0.02 % sodium azide and 50 % glycerol.
Preservative:	Sodium azide
Precaution of Use:	This product contains sodium azide: a POISONOUS AND HAZARDOUS SUBSTANCE which should be handled by trained staff only.
Storage:	-20 °C
Storage Comment:	Stable at -20°C for at least 1 year.
Expiry Date:	12 months



Western Blotting

Image 1. Western blot analysis of extracts from HuvEc cells, using Clock Antibody. The lane on the right is treated with the synthesized peptide.



Immunohistochemistry

Image 2. Immunohistochemistry analysis of paraffin-embedded human skeletal muscle tissue, using Clock Antibody. The picture on the right is treated with the synthesized peptide.