



Datasheet for ABIN1533515
anti-MED14 antibody (AA 701-750)



[Go to Product page](#)

2 Images

Overview

Quantity:	100 µL
Target:	MED14
Binding Specificity:	AA 701-750
Reactivity:	Human, Mouse
Host:	Rabbit
Clonality:	Polyclonal
Conjugate:	This MED14 antibody is un-conjugated
Application:	ELISA, Immunohistochemistry (IHC), Immunofluorescence (IF)

Product Details

Immunogen:	The antiserum was produced against synthesized peptide derived from human MED14.
Isotype:	IgG
Specificity:	MED14 Antibody detects endogenous levels of total MED14 protein.
Purification:	The antibody was purified from rabbit antiserum by affinity-chromatography using immunogen.
Purity:	> 95 %

Target Details

Target:	MED14
Alternative Name:	MED14 (MED14 Products)
Background:	Synonyms: ARC150, Activator-recruited cofactor 150 kDa component, CRSP2, CSP2, Cofactor

Target Details

required for Sp1 transcriptional activation subunit 2, DRIP150, EXLM1, Thyroid hormone receptor-associated protein complex 170 kDa component, Transcriptional coactivator CRSP150
NCBI Gene Symbol: MED14

Molecular Weight: 160 kDa

Gene ID: 9282

OMIM: 300182

UniProt: [O60244](#)

Pathways: [Intracellular Steroid Hormone Receptor Signaling Pathway](#), [Nuclear Hormone Receptor Binding](#), [Stem Cell Maintenance](#), [Regulation of Lipid Metabolism by PPARalpha](#)

Application Details

Application Notes: IHC: 1:50~1:100 IF: 1:100~1:500 ELISA: 1:5000

Comment: Unigene-Number: Hs.407604 (NCBI Gene Symbol: MED14)

Restrictions: For Research Use only

Handling

Format: Liquid

Concentration: 1 mg/mL

Buffer: phosphate buffered saline (without Mg²⁺ and Ca²⁺), pH 7.4, 150 mM NaCl, 0.02 % sodium azide and 50 % glycerol.

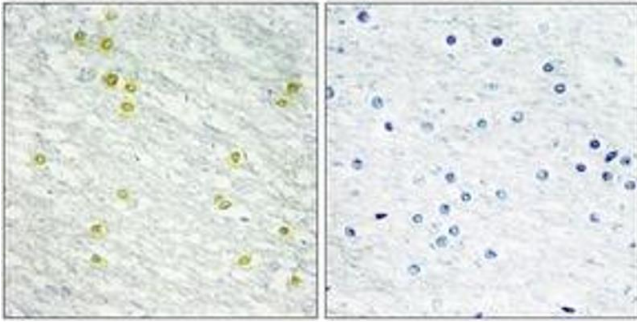
Preservative: Sodium azide

Precaution of Use: This product contains sodium azide: a POISONOUS AND HAZARDOUS SUBSTANCE which should be handled by trained staff only.

Storage: -20 °C

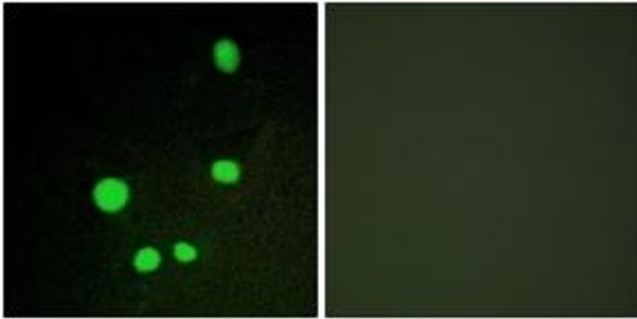
Storage Comment: Stable at -20°C for at least 1 year.

Expiry Date: 12 months



Immunohistochemistry

Image 1. Immunohistochemistry analysis of paraffin-embedded human brain tissue, using MED14 Antibody. The picture on the right is treated with the synthesized peptide.



Immunofluorescence

Image 2. Immunofluorescence analysis of COS7 cells, using MED14 Antibody. The picture on the right is treated with the synthesized peptide.