

Datasheet for ABIN1533532  
**anti-TRIM3 antibody (AA 1-50)**

## 3 Images

[Go to Product page](#)

## Overview

Quantity:	100 µg
Target:	TRIM3
Binding Specificity:	AA 1-50
Reactivity:	Human, Mouse, Rat
Host:	Rabbit
Clonality:	Polyclonal
Conjugate:	This TRIM3 antibody is un-conjugated
Application:	ELISA, Western Blotting (WB), Immunohistochemistry (IHC), Immunofluorescence (IF)

## Product Details

Immunogen:	The antiserum was produced against synthesized peptide derived from human TRIM3.
Isotype:	IgG
Specificity:	TRIM3 Antibody detects endogenous levels of total TRIM3 protein.
Purification:	The antibody was purified from rabbit antiserum by affinity-chromatography using immunogen.
Purity:	> 95 %

## Target Details

Target:	TRIM3
Alternative Name:	TRIM3 ( <a href="#">TRIM3 Products</a> )
Background:	Synonyms: Tripartite motif-containing protein 3, RING finger protein 22, Brain-expressed RING

## Target Details

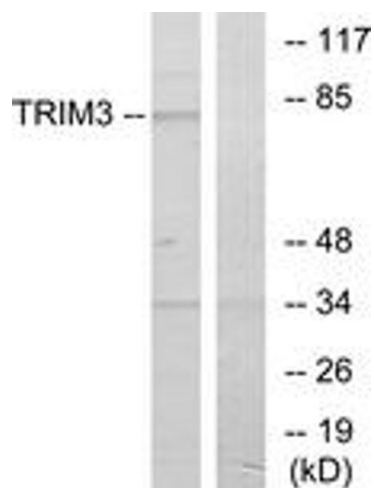
	finger protein, RING finger protein 97, TRIM3, BERP, RNF22, RNF97 NCBI Gene Symbol: TRIM3
Molecular Weight:	80 kDa
Gene ID:	10612
OMIM:	605493
UniProt:	<a href="#">O75382</a>

## Application Details

Application Notes:	WB: 1:500~1:1000 IHC: 1:50~1:100 IF: 1:100~1:500 ELISA: 1:40000
Comment:	Unigene-Number: Hs.591992 (NCBI Gene Symbol: TRIM3)
Restrictions:	For Research Use only

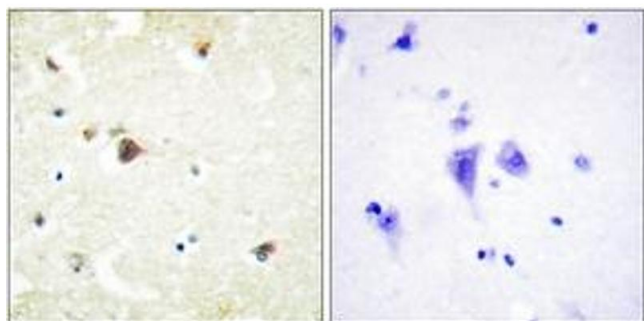
## Handling

Format:	Liquid
Concentration:	1 mg/mL
Buffer:	phosphate buffered saline (without Mg <sup>2+</sup> and Ca <sup>2+</sup> ), pH 7.4, 150 mM NaCl, 0.02 % sodium azide and 50 % glycerol.
Preservative:	Sodium azide
Precaution of Use:	This product contains sodium azide: a POISONOUS AND HAZARDOUS SUBSTANCE which should be handled by trained staff only.
Storage:	-20 °C
Storage Comment:	Stable at -20°C for at least 1 year.
Expiry Date:	12 months



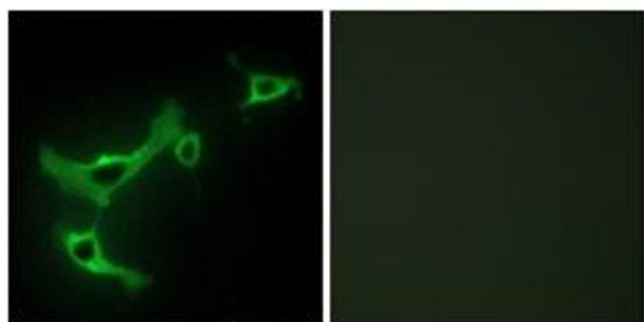
#### Western Blotting

**Image 1.** Western blot analysis of extracts from COLO cells, using TRIM3 Antibody. The lane on the right is treated with the synthesized peptide.



#### Immunohistochemistry

**Image 2.** Immunohistochemistry analysis of paraffin-embedded human brain tissue, using TRIM3 Antibody. The picture on the right is treated with the synthesized peptide.



#### Immunofluorescence

**Image 3.** Immunofluorescence analysis of NIH-3T3 cells, using TRIM3 Antibody. The picture on the right is treated with the synthesized peptide.