

Datasheet for ABIN1533534
anti-TACC1 antibody (AA 11-60)

2 Images

[Go to Product page](#)

Overview

| | |
|----------------------|---|
| Quantity: | 100 µg |
| Target: | TACC1 |
| Binding Specificity: | AA 11-60 |
| Reactivity: | Human, Mouse |
| Host: | Rabbit |
| Clonality: | Polyclonal |
| Conjugate: | This TACC1 antibody is un-conjugated |
| Application: | Western Blotting (WB), ELISA, Immunofluorescence (IF) |

Product Details

| | |
|---------------|---|
| Immunogen: | The antiserum was produced against synthesized peptide derived from human TACC1. |
| Isotype: | IgG |
| Specificity: | TACC1 Antibody detects endogenous levels of total TACC1 protein. |
| Purification: | The antibody was purified from rabbit antiserum by affinity-chromatography using immunogen. |
| Purity: | > 95 % |

Target Details

| | |
|-------------------|--|
| Target: | TACC1 |
| Alternative Name: | TACC1 (TACC1 Products) |
| Background: | Synonyms: KIAA1103, transforming acidic coiled-coil-containing protein 1 |

Target Details

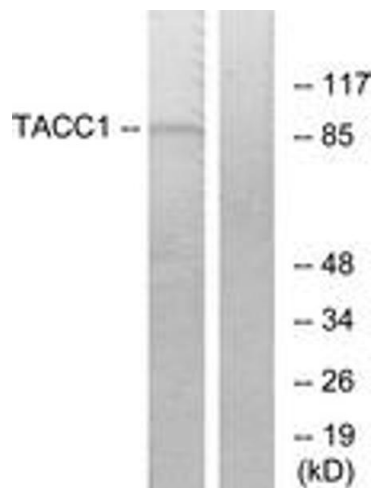
| | |
|-------------------|-------------------------|
| | NCBI Gene Symbol: TACC1 |
| Molecular Weight: | 87 kDa |
| Gene ID: | 6867 |
| OMIM: | 605301 |
| UniProt: | O75410 |

Application Details

| | |
|--------------------|--|
| Application Notes: | WB: 1:500~1:1000 IF: 1:100~1:500 ELISA: 1:10000 |
| Comment: | Unigene-Number: Hs.279245, Hs.721516 (NCBI Gene Symbol: TACC1) |
| Restrictions: | For Research Use only |

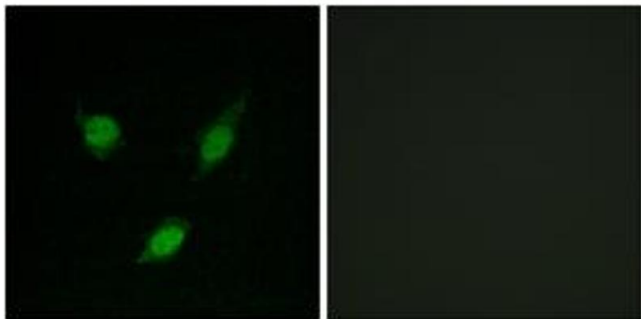
Handling

| | |
|--------------------|---|
| Format: | Liquid |
| Concentration: | 1 mg/mL |
| Buffer: | phosphate buffered saline (without Mg ²⁺ and Ca ²⁺), pH 7.4, 150 mM NaCl, 0.02 % sodium azide and 50 % glycerol. |
| Preservative: | Sodium azide |
| Precaution of Use: | This product contains sodium azide: a POISONOUS AND HAZARDOUS SUBSTANCE which should be handled by trained staff only. |
| Storage: | -20 °C |
| Storage Comment: | Stable at -20°C for at least 1 year. |
| Expiry Date: | 12 months |



Western Blotting

Image 1. Western blot analysis of extracts from K562 cells, using TACC1 Antibody. The lane on the right is treated with the synthesized peptide.



Immunofluorescence

Image 2. Immunofluorescence analysis of MCF7 cells, using TACC1 Antibody. The picture on the right is treated with the synthesized peptide.