

Datasheet for ABIN1533542  
**anti-RBM39 antibody (AA 171-220)**[Go to Product page](#)

## 3 Images

## Overview

Quantity:	100 µg
Target:	RBM39
Binding Specificity:	AA 171-220
Reactivity:	Human, Mouse, Rat
Host:	Rabbit
Clonality:	Polyclonal
Conjugate:	This RBM39 antibody is un-conjugated
Application:	Western Blotting (WB), ELISA, Immunohistochemistry (IHC), Immunofluorescence (IF)

## Product Details

Immunogen:	The antiserum was produced against synthesized peptide derived from human Caper.
Isotype:	IgG
Specificity:	Caper Antibody detects endogenous levels of total Caper protein.
Purification:	The antibody was purified from rabbit antiserum by affinity-chromatography using immunogen.
Purity:	> 95 %

## Target Details

Target:	RBM39
Alternative Name:	Caper ( <a href="#">RBM39 Products</a> )
Background:	Synonyms: Renin receptor, Renin/prorenin receptor, ATPase H(+)-transporting lysosomal

## Target Details

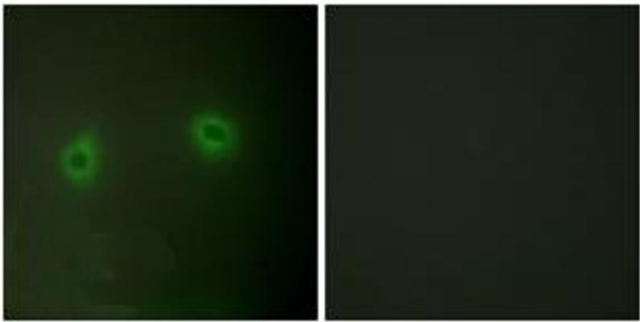
	accessory protein 2, ATPase H(+)-transporting lysosomal-interacting protein 2, Vacuolar ATP synthase membrane sector-associated protein M8-9, V-ATPase M8.9 subunit, ATP6M8-9, N14F NCBI Gene Symbol: ATP6AP2
Molecular Weight:	39 kDa
Gene ID:	10159
OMIM:	300556
UniProt:	<a href="#">075787</a>

## Application Details

Application Notes:	WB: 1:500~1:1000 IHC: 1:50~1:100 IF: 1:100~1:500 ELISA: 1:20000
Comment:	Unigene-Number: Hs.495960, Hs.596514 (NCBI Gene Symbol: ATP6AP2)
Restrictions:	For Research Use only

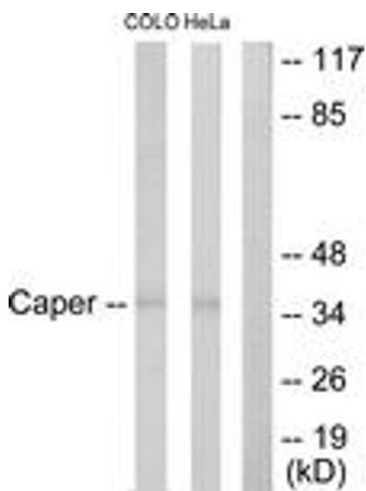
## Handling

Format:	Liquid
Concentration:	1 mg/mL
Buffer:	phosphate buffered saline (without Mg <sup>2+</sup> and Ca <sup>2+</sup> ), pH 7.4, 150 mM NaCl, 0.02 % sodium azide and 50 % glycerol.
Preservative:	Sodium azide
Precaution of Use:	This product contains sodium azide: a POISONOUS AND HAZARDOUS SUBSTANCE which should be handled by trained staff only.
Storage:	-20 °C
Storage Comment:	Stable at -20°C for at least 1 year.
Expiry Date:	12 months



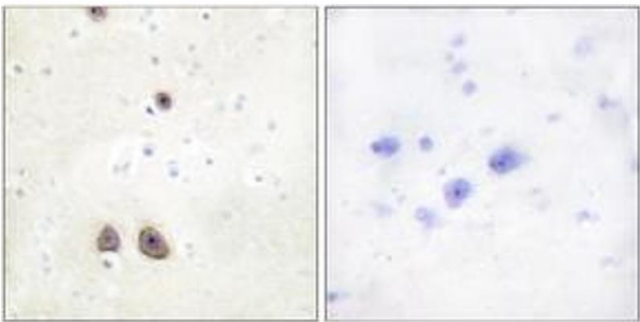
Immunofluorescence

**Image 1.** Immunofluorescence analysis of HeLa cells, using Caper Antibody. The picture on the right is treated with the synthesized peptide.



Western Blotting

**Image 2.** Western blot analysis of extracts from COLO205/HeLa cells, using Caper Antibody. The lane on the right is treated with the synthesized peptide.



Immunohistochemistry

**Image 3.** Immunohistochemistry analysis of paraffin-embedded human brain tissue, using Caper Antibody. The picture on the right is treated with the synthesized peptide.