

Datasheet for ABIN1533544  
**anti-CIB2 antibody (AA 21-70)**



[Go to Product page](#)

1 Image

## Overview

Quantity:	100 µL
Target:	CIB2
Binding Specificity:	AA 21-70
Reactivity:	Human, Mouse, Rat
Host:	Rabbit
Clonality:	Polyclonal
Conjugate:	This CIB2 antibody is un-conjugated
Application:	ELISA, Immunohistochemistry (IHC)

## Product Details

Immunogen:	The antiserum was produced against synthesized peptide derived from human CIB2.
Isotype:	IgG
Specificity:	CIB2 Antibody detects endogenous levels of total CIB2 protein.
Purification:	The antibody was purified from rabbit antiserum by affinity-chromatography using immunogen.
Purity:	> 95 %

## Target Details

Target:	CIB2
Alternative Name:	CIB2 ( <a href="#">CIB2 Products</a> )
Background:	Synonyms: Calcium and integrin-binding family member 2, Kinase-interacting protein 2, KIP 2,

### Target Details

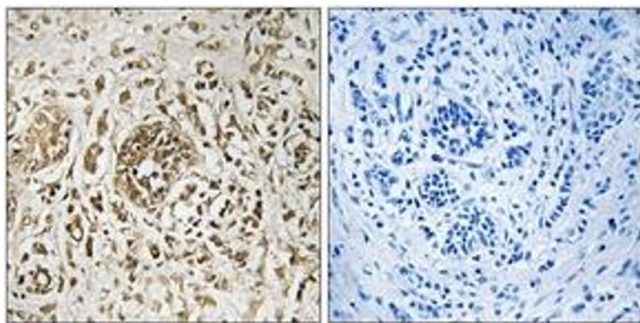
	CIB2, KIP2
	NCBI Gene Symbol: CIB2
Molecular Weight:	21 kDa
Gene ID:	10518
OMIM:	605564
UniProt:	<a href="#">O75838</a>

### Application Details

Application Notes:	IHC: 1:50~1:100 ELISA: 1:5000
Comment:	Unigene-Number: Hs.129867 (NCBI Gene Symbol: CIB2)
Restrictions:	For Research Use only

### Handling

Format:	Liquid
Concentration:	1 mg/mL
Buffer:	phosphate buffered saline (without Mg2+ and Ca2+), pH 7.4, 150 mM NaCl, 0.02 % sodium azide and 50 % glycerol.
Preservative:	Sodium azide
Precaution of Use:	This product contains sodium azide: a POISONOUS AND HAZARDOUS SUBSTANCE which should be handled by trained staff only.
Storage:	-20 °C
Storage Comment:	Stable at -20°C for at least 1 year.
Expiry Date:	12 months



#### Immunohistochemistry

**Image 1.** Immunohistochemistry analysis of paraffin-embedded human breast carcinoma tissue, using CIB2 Antibody. The picture on the right is treated with the synthesized peptide.