



[Go to Product page](#)

Datasheet for ABIN1533545
anti-TNFSF13 antibody (AA 151-200)

3 Images

Overview

Quantity:	100 µg
Target:	TNFSF13
Binding Specificity:	AA 151-200
Reactivity:	Human, Mouse, Rat
Host:	Rabbit
Clonality:	Polyclonal
Conjugate:	This TNFSF13 antibody is un-conjugated
Application:	Western Blotting (WB), Immunohistochemistry (IHC), ELISA, Immunofluorescence (IF)

Product Details

Immunogen:	The antiserum was produced against synthesized peptide derived from human TALL-2.
Isotype:	IgG
Specificity:	TALL-2 Antibody detects endogenous levels of total TALL-2 protein.
Purification:	The antibody was purified from rabbit antiserum by affinity-chromatography using immunogen.
Purity:	> 95 %

Target Details

Target:	TNFSF13
Alternative Name:	TALL-2 (TNFSF13 Products)
Background:	Synonyms: Tumor necrosis factor ligand superfamily member 13, A proliferation-inducing

Target Details

ligand, APRIL, TNF- and APOL-related leukocyte expressed ligand 2, TALL-2, TNF-related death ligand 1, TRDL-1, CD256, TNFSF13, APRIL, TALL2, ZTNF2
NCBI Gene Symbol: TNFSF13

Molecular Weight: 27 kDa

Gene ID: 8741

OMIM: 604472

UniProt: [O75888](#)

Pathways: [Regulation of Leukocyte Mediated Immunity](#), [Positive Regulation of Immune Effector Process](#), [Production of Molecular Mediator of Immune Response](#)

Application Details

Application Notes: WB: 1:500~1:1000 IHC: 1:50~1:100 IF: 1:100~1:500 ELISA: 1:10000

Comment: Unigene-Number: Hs.54673 (NCBI Gene Symbol: TNFSF13)

Restrictions: For Research Use only

Handling

Format: Liquid

Concentration: 1 mg/mL

Buffer: phosphate buffered saline (without Mg²⁺ and Ca²⁺), pH 7.4, 150 mM NaCl, 0.02 % sodium azide and 50 % glycerol.

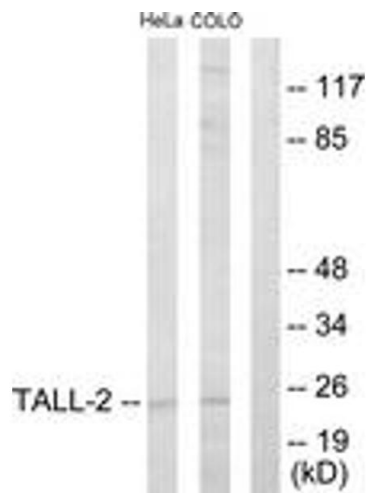
Preservative: Sodium azide

Precaution of Use: This product contains sodium azide: a POISONOUS AND HAZARDOUS SUBSTANCE which should be handled by trained staff only.

Storage: -20 °C

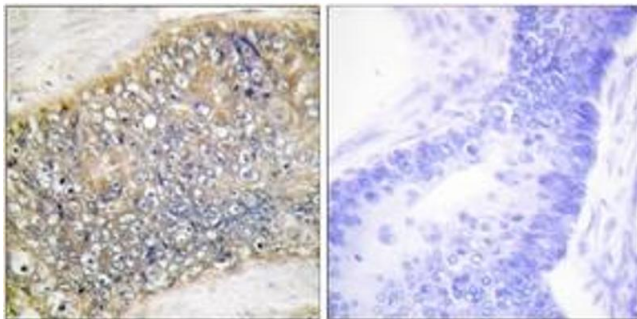
Storage Comment: Stable at -20°C for at least 1 year.

Expiry Date: 12 months



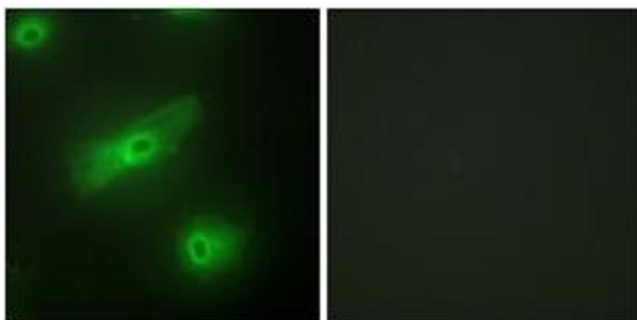
Western Blotting

Image 1. Western blot analysis of extracts from HeLa/COLO205 cells, using TALL-2 Antibody. The lane on the right is treated with the synthesized peptide.



Immunohistochemistry

Image 2. Immunohistochemistry analysis of paraffin-embedded human colon carcinoma tissue, using TALL-2 Antibody. The picture on the right is treated with the synthesized peptide.



Immunofluorescence

Image 3. Immunofluorescence analysis of HeLa cells, using TALL-2 Antibody. The picture on the right is treated with the synthesized peptide.