



Datasheet for ABIN1533552
anti-JHD3B antibody (AA 351-400)



[Go to Product page](#)

1 Image

Overview

| | |
|----------------------|--------------------------------------|
| Quantity: | 100 µg |
| Target: | JHD3B |
| Binding Specificity: | AA 351-400 |
| Reactivity: | Human |
| Host: | Rabbit |
| Clonality: | Polyclonal |
| Conjugate: | This JHD3B antibody is un-conjugated |
| Application: | Immunohistochemistry (IHC), ELISA |

Product Details

| | |
|---------------|---|
| Immunogen: | The antiserum was produced against synthesized peptide derived from human KDM4B. |
| Isotype: | IgG |
| Specificity: | JHD3B Antibody detects endogenous levels of total JHD3B protein. |
| Purification: | The antibody was purified from rabbit antiserum by affinity-chromatography using immunogen. |
| Purity: | > 95 % |

Target Details

| | |
|-------------------|---|
| Target: | JHD3B |
| Alternative Name: | JHD3B (JHD3B Products) |
| Background: | Synonyms: JMJ2B, Jumonji domain containing protein 2B |

Target Details

NCBI Gene Symbol: KDM4B

Molecular Weight: 121 kDa

Gene ID: 23030

OMIM: 609765

UniProt: [O94953](#)

Application Details

Application Notes: IHC: 1:50~1:100 ELISA: 1:1000

Comment: Unigene-Number: Hs.654816 (NCBI Gene Symbol: KDM4B)

Restrictions: For Research Use only

Handling

Format: Liquid

Concentration: 1 mg/mL

Buffer: phosphate buffered saline (without Mg²⁺ and Ca²⁺), pH 7.4, 150 mM NaCl, 0.02 % sodium azide and 50 % glycerol.

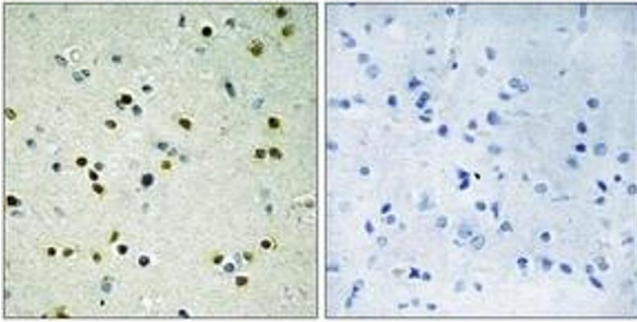
Preservative: Sodium azide

Precaution of Use: This product contains sodium azide: a POISONOUS AND HAZARDOUS SUBSTANCE which should be handled by trained staff only.

Storage: -20 °C

Storage Comment: Stable at -20°C for at least 1 year.

Expiry Date: 12 months



Immunohistochemistry

Image 1. Immunohistochemistry analysis of paraffin-embedded human brain, using JHD3B Antibody. The picture on the right is treated with the synthesized peptide.