



[Go to Product page](#)

Datasheet for ABIN1533554  
**anti-ALX3 antibody (AA 171-220)**

2 Images

Overview

Quantity:	100 µL
Target:	ALX3
Binding Specificity:	AA 171-220
Reactivity:	Human, Mouse, Rat
Host:	Rabbit
Clonality:	Polyclonal
Conjugate:	This ALX3 antibody is un-conjugated
Application:	Western Blotting (WB), ELISA, Immunofluorescence (IF)

Product Details

Immunogen:	The antiserum was produced against synthesized peptide derived from human ALX3.
Isotype:	IgG
Specificity:	ALX3 Antibody detects endogenous levels of total ALX3 protein.
Purification:	The antibody was purified from rabbit antiserum by affinity-chromatography using immunogen.
Purity:	> 95 %

Target Details

Target:	ALX3
Alternative Name:	ALX3 ( <a href="#">ALX3 Products</a> )
Background:	Synonyms: Homeobox protein aristaless-like 3, Homeobox protein aristaless-like 3

## Target Details

---

NCBI Gene Symbol: ALX3

Molecular Weight: 36 kDa

Gene ID: 257

OMIM: 606014

UniProt: [O95076](#)

## Application Details

---

Application Notes: WB: 1:500~1:1000 IF: 1:100~1:500 ELISA: 1:5000

Comment: Unigene-Number: Hs.669953 (NCBI Gene Symbol: ALX3)

Restrictions: For Research Use only

## Handling

---

Format: Liquid

Concentration: 1 mg/mL

Buffer: phosphate buffered saline (without Mg<sup>2+</sup> and Ca<sup>2+</sup>), pH 7.4, 150 mM NaCl, 0.02 % sodium azide and 50 % glycerol.

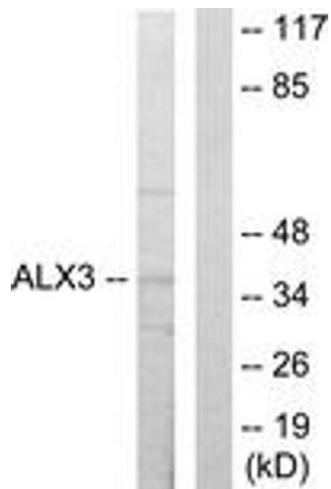
Preservative: Sodium azide

Precaution of Use: This product contains sodium azide: a POISONOUS AND HAZARDOUS SUBSTANCE which should be handled by trained staff only.

Storage: -20 °C

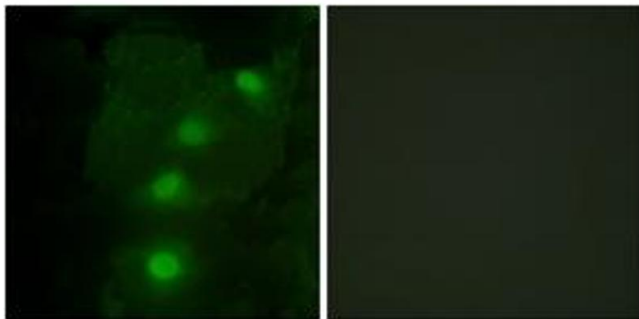
Storage Comment: Stable at -20°C for at least 1 year.

Expiry Date: 12 months



### Western Blotting

**Image 1.** Western blot analysis of extracts from 293 cells, using ALX3 Antibody. The lane on the right is treated with the synthesized peptide.



### Immunofluorescence

**Image 2.** Immunofluorescence analysis of HeLa cells, using ALX3 Antibody. The picture on the right is treated with the synthesized peptide.