

Datasheet for ABIN1533555
anti-TNFSF15 antibody (AA 181-230)



[Go to Product page](#)

2 Images

Overview

Quantity:	100 µL
Target:	TNFSF15
Binding Specificity:	AA 181-230
Reactivity:	Human
Host:	Rabbit
Clonality:	Polyclonal
Conjugate:	This TNFSF15 antibody is un-conjugated
Application:	Western Blotting (WB), ELISA, Immunofluorescence (IF)

Product Details

Immunogen:	The antiserum was produced against synthesized peptide derived from human TNFSF15.
Isotype:	IgG
Specificity:	TNFSF15 Antibody detects endogenous levels of total TNFSF15 protein.
Purification:	The antibody was purified from rabbit antiserum by affinity-chromatography using immunogen.
Purity:	> 95 %

Target Details

Target:	TNFSF15
Alternative Name:	TNFSF15 (TNFSF15 Products)
Background:	Synonyms: Tumor necrosis factor ligand superfamily member 15, Vascular endothelial cell

Target Details

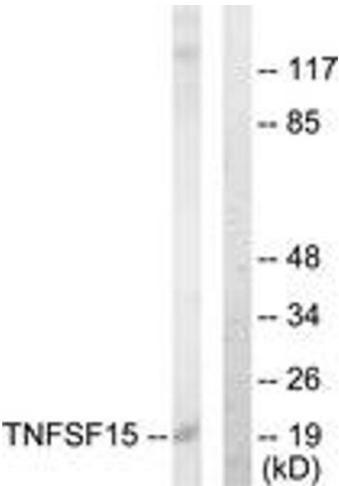
	growth inhibitor, TNF ligand-related molecule 1, Tumor necrosis factor ligand superfamily member 15, membrane form, Tumor necrosis factor ligand superfamily member 15, secreted NCBI Gene Symbol: TNFSF15
Molecular Weight:	20 kDa
Gene ID:	9966
OMIM:	604052
UniProt:	O95150
Pathways:	Positive Regulation of Endopeptidase Activity , Autophagy

Application Details

Application Notes:	WB: 1:500~1:1000 IF: 1:100~1:500 ELISA: 1:20000
Comment:	Unigene-Number: Hs.241382 (NCBI Gene Symbol: TNFSF15)
Restrictions:	For Research Use only

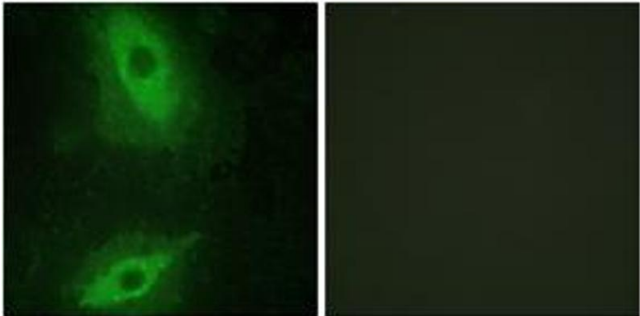
Handling

Format:	Liquid
Concentration:	1 mg/mL
Buffer:	phosphate buffered saline (without Mg ²⁺ and Ca ²⁺), pH 7.4, 150 mM NaCl, 0.02 % sodium azide and 50 % glycerol.
Preservative:	Sodium azide
Precaution of Use:	This product contains sodium azide: a POISONOUS AND HAZARDOUS SUBSTANCE which should be handled by trained staff only.
Storage:	-20 °C
Storage Comment:	Stable at -20°C for at least 1 year.
Expiry Date:	12 months



Western Blotting

Image 1. Western blot analysis of extracts from COLO205 cells, using TNFSF15 Antibody. The lane on the right is treated with the synthesized peptide.



Immunofluorescence

Image 2. Immunofluorescence analysis of HeLa cells, using TNFSF15 Antibody. The picture on the right is treated with the synthesized peptide.