

Datasheet for ABIN1533566
anti-SIX Homeobox 6 antibody (AA 121-170)[Go to Product page](#)

2 Images

Overview

Quantity:	100 µg
Target:	SIX Homeobox 6 (SIX6)
Binding Specificity:	AA 121-170
Reactivity:	Human, Mouse, Rat
Host:	Rabbit
Clonality:	Polyclonal
Application:	Western Blotting (WB), ELISA, Immunofluorescence (IF)

Product Details

Immunogen:	The antiserum was produced against synthesized peptide derived from human SIX6.
Isotype:	IgG
Specificity:	SIX6 Antibody detects endogenous levels of total SIX6 protein.
Purification:	The antibody was purified from rabbit antiserum by affinity-chromatography using immunogen.
Purity:	> 95 %

Target Details

Target:	SIX Homeobox 6 (SIX6)
Alternative Name:	SIX6 (SIX6 Products)
Background:	Synonyms: Homeobox protein SIX6, Sine oculis homeobox homolog 6, Optic homeobox 2, Homeodomain protein OPTX2, OPTX2, SIX9

Target Details

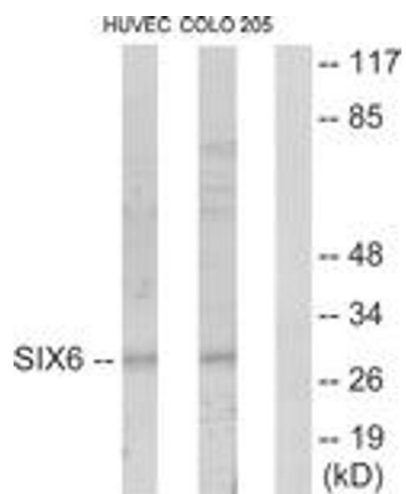
	NCBI Gene Symbol: SIX6
Molecular Weight:	27 kDa
Gene ID:	4990
OMIM:	606326
UniProt:	O95475

Application Details

Application Notes:	WB: 1:500~1:1000 IF: 1:100~1:500 ELISA: 1:5000
Comment:	Unigene-Number: Hs.194756 (NCBI Gene Symbol: SIX6)
Restrictions:	For Research Use only

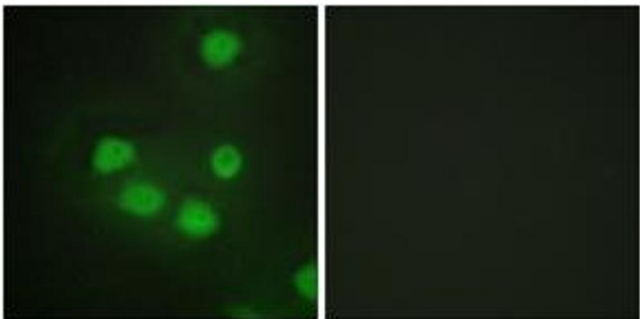
Handling

Format:	Liquid
Concentration:	1 mg/mL
Buffer:	phosphate buffered saline (without Mg ²⁺ and Ca ²⁺), pH 7.4, 150 mM NaCl, 0.02 % sodium azide and 50 % glycerol.
Preservative:	Sodium azide
Precaution of Use:	This product contains sodium azide: a POISONOUS AND HAZARDOUS SUBSTANCE which should be handled by trained staff only.
Storage:	-20 °C
Storage Comment:	Stable at -20°C for at least 1 year.
Expiry Date:	12 months



Western Blotting

Image 1. Western blot analysis of extracts from HuvEc/COLO205 cells, using SIX6 Antibody. The lane on the right is treated with the synthesized peptide.



Immunofluorescence

Image 2. Immunofluorescence analysis of HepG2 cells, using SIX6 Antibody. The picture on the right is treated with the synthesized peptide.