

Datasheet for ABIN1533570  
**anti-MAP4K4 antibody (AA 406-455)**[Go to Product page](#)

## 2 Images

## Overview

|                      |   |
|----------------------|---|
| Quantity:            | 100 µg  |
| Target:              | MAP4K4  |
| Binding Specificity: | AA 406-455  |
| Reactivity:          | Human, Mouse  |
| Host:                | Rabbit  |
| Clonality:           | Polyclonal  |
| Conjugate:           | This MAP4K4 antibody is un-conjugated                 |
| Application:         | Western Blotting (WB), ELISA, Immunofluorescence (IF) |

## Product Details

|               |   |
|---------------|---|
| Immunogen:    | The antiserum was produced against synthesized peptide derived from human MEKKK 4.          |
| Isotype:      | IgG   |
| Specificity:  | MEKKK 4 Antibody detects endogenous levels of total MEKKK 4 protein.                        |
| Purification: | The antibody was purified from rabbit antiserum by affinity-chromatography using immunogen. |
| Purity:       | > 95 %  |

## Target Details

|                   |   |
|-------------------|---|
| Target:           | MAP4K4  |
| Alternative Name: | MEKKK 4 ( <a href="#">MAP4K4 Products</a> )                                       |
| Background:       | Synonyms: HPK/GCK-like kinase HGK, M4K4, MAP4K4, MAPK/ERK kinase kinase kinase 4, |

## Target Details

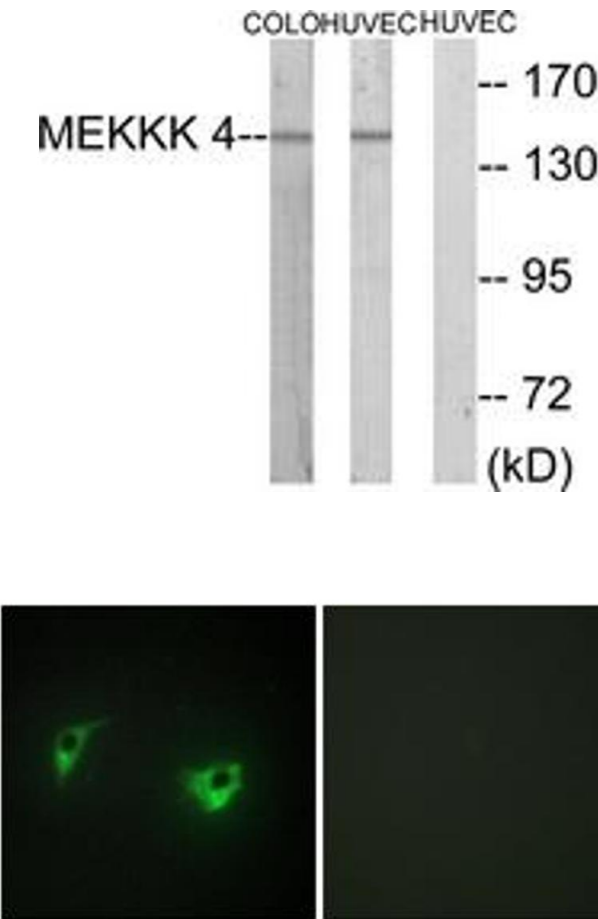
|                   |  |
|-------------------|--|
|                   | MEK kinase kinase 4, MEKKK 4, Nck interacting kinase, hepatocyte progenitor kinase-like/germinal center kinase-like kinase, mitogen-activated protein kinase kinase kinase 4<br>NCBI Gene Symbol: MAP4K4 |
| Molecular Weight: | 142 kDa  |
| Gene ID:          | 9448   |
| OMIM:             | 604666   |
| UniProt:          | <a href="#">O95819</a>   |

## Application Details

|                    |  |
|--------------------|--|
| Application Notes: | WB: 1:500~1:1000 IF: 1:100~1:500 ELISA: 1:5000       |
| Comment:           | Unigene-Number: Hs.431550 (NCBI Gene Symbol: MAP4K4) |
| Restrictions:      | For Research Use only                                |

## Handling

|                    |   |
|--------------------|---|
| Format:            | Liquid  |
| Concentration:     | 1 mg/mL   |
| Buffer:            | phosphate buffered saline (without Mg <sup>2+</sup> and Ca <sup>2+</sup> ), pH 7.4, 150 mM NaCl, 0.02 % sodium azide and 50 % glycerol. |
| Preservative:      | Sodium azide  |
| Precaution of Use: | This product contains sodium azide: a POISONOUS AND HAZARDOUS SUBSTANCE which should be handled by trained staff only.                  |
| Storage:           | -20 °C  |
| Storage Comment:   | Stable at -20°C for at least 1 year.  |
| Expiry Date:       | 12 months   |



Western Blotting

**Image 1.** Western blot analysis of extracts from HuvEc/COLO cells, using MEK4 Antibody. The lane on the right is treated with the synthesized peptide.

Immunofluorescence

**Image 2.** Immunofluorescence analysis of A549 cells, using MEK4 Antibody. The picture on the right is treated with the synthesized peptide.