

Datasheet for ABIN1533581
anti-THRB antibody (AA 391-440)[Go to Product page](#)

3 Images

Overview

Quantity:	100 µg
Target:	THRB
Binding Specificity:	AA 391-440
Reactivity:	Human, Mouse, Rat
Host:	Rabbit
Clonality:	Polyclonal
Conjugate:	This THRB antibody is un-conjugated
Application:	Western Blotting (WB), ELISA, Immunohistochemistry (IHC), Immunofluorescence (IF)

Product Details

Immunogen:	The antiserum was produced against synthesized peptide derived from human THRB.
Isotype:	IgG
Specificity:	THRB Antibody detects endogenous levels of total THRB protein.
Purification:	The antibody was purified from rabbit antiserum by affinity-chromatography using immunogen.
Purity:	> 95 %

Target Details

Target:	THRB
Alternative Name:	THRB (THRB Products)
Background:	Synonyms: Coagulation factor II, F2, THRB

Target Details

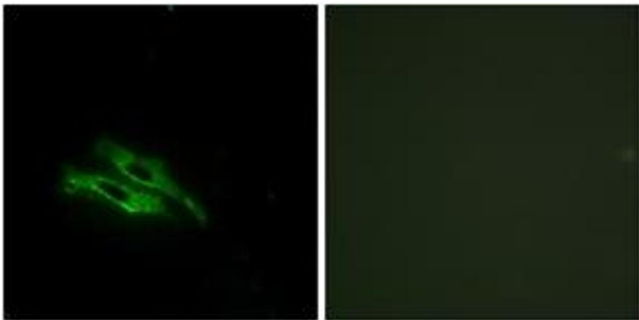
	NCBI Gene Symbol: F2
Molecular Weight:	70 kDa
Gene ID:	2147
OMIM:	176930
UniProt:	P00734
Pathways:	Nuclear Receptor Transcription Pathway , Steroid Hormone Mediated Signaling Pathway , Sensory Perception of Sound

Application Details

Application Notes:	WB: 1:500~1:1000 IHC: 1:50~1:100 IF: 1:100~1:500 ELISA: 1:10000
Comment:	Unigene-Number: Hs.655207 (NCBI Gene Symbol: F2)
Restrictions:	For Research Use only

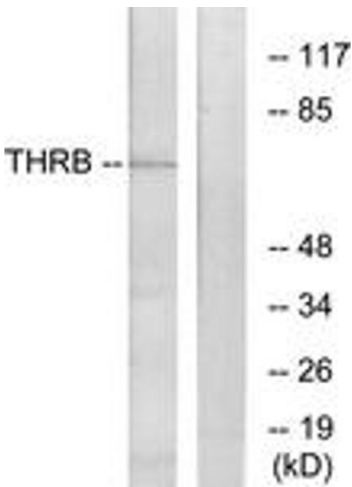
Handling

Format:	Liquid
Concentration:	1 mg/mL
Buffer:	phosphate buffered saline (without Mg ²⁺ and Ca ²⁺), pH 7.4, 150 mM NaCl, 0.02 % sodium azide and 50 % glycerol.
Preservative:	Sodium azide
Precaution of Use:	This product contains sodium azide: a POISONOUS AND HAZARDOUS SUBSTANCE which should be handled by trained staff only.
Storage:	-20 °C
Storage Comment:	Stable at -20°C for at least 1 year.
Expiry Date:	12 months



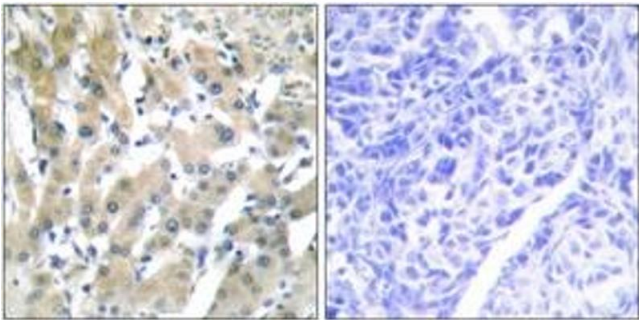
Immunofluorescence

Image 1. Immunofluorescence analysis of NIH-3T3 cells, using THR-B Antibody. The picture on the right is treated with the synthesized peptide.



Western Blotting

Image 2. Western blot analysis of extracts from NIH-3T3 cells, using THR-B Antibody. The lane on the right is treated with the synthesized peptide.



Immunohistochemistry

Image 3. Immunohistochemistry analysis of paraffin-embedded human liver carcinoma tissue, using THR-B Antibody. The picture on the right is treated with the synthesized peptide.