

Datasheet for ABIN1533590
anti-CKM antibody (AA 10-59)



[Go to Product page](#)

3 Images

Overview

Quantity:	100 µL
Target:	CKM
Binding Specificity:	AA 10-59
Reactivity:	Human, Mouse, Rat
Host:	Rabbit
Clonality:	Polyclonal
Conjugate:	This CKM antibody is un-conjugated
Application:	Western Blotting (WB), ELISA, Immunohistochemistry (IHC), Immunofluorescence (IF)

Product Details

Immunogen:	The antiserum was produced against synthesized peptide derived from human M-CK.
Isotype:	IgG
Specificity:	M-CK Antibody detects endogenous levels of total M-CK protein.
Purification:	The antibody was purified from rabbit antiserum by affinity-chromatography using immunogen.
Purity:	> 95 %

Target Details

Target:	CKM
Alternative Name:	M-CK (CKM Products)
Background:	Synonyms: Creatine kinase M-type, Creatine kinase M chain, M-CK, CKMM, CKM

Target Details

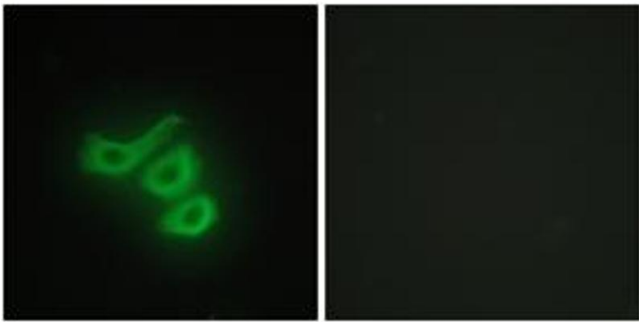
	NCBI Gene Symbol: CKM
Molecular Weight:	43 kDa
Gene ID:	1158
OMIM:	123310
UniProt:	P06732

Application Details

Application Notes:	WB: 1:500~1:1000 IHC: 1:50~1:100 IF: 1:100~1:500 ELISA: 1:40000
Comment:	Unigene-Number: Hs.334347 (NCBI Gene Symbol: CKM)
Restrictions:	For Research Use only

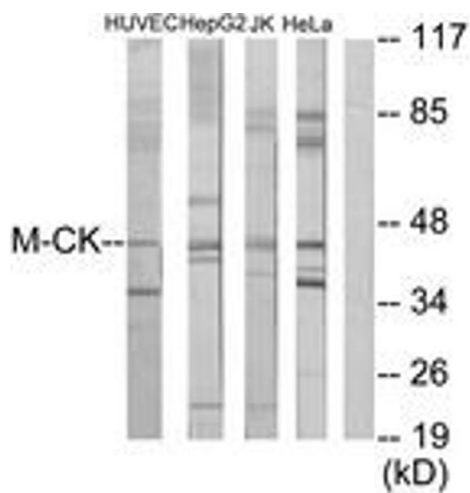
Handling

Format:	Liquid
Concentration:	1 mg/mL
Buffer:	phosphate buffered saline (without Mg ²⁺ and Ca ²⁺), pH 7.4, 150 mM NaCl, 0.02 % sodium azide and 50 % glycerol.
Preservative:	Sodium azide
Precaution of Use:	This product contains sodium azide: a POISONOUS AND HAZARDOUS SUBSTANCE which should be handled by trained staff only.
Storage:	-20 °C
Storage Comment:	Stable at -20°C for at least 1 year.
Expiry Date:	12 months



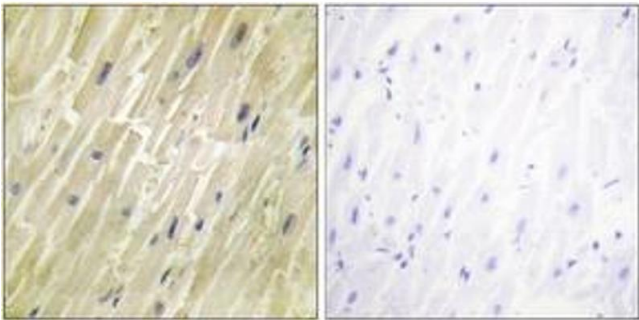
Immunofluorescence

Image 1. Immunofluorescence analysis of HepG2 cells, using M-CK Antibody. The picture on the right is treated with the synthesized peptide.



Western Blotting

Image 2. Western blot analysis of extracts from Jurkat/HeLa/HepG2/HuvEc cells, using M-CK Antibody. The lane on the right is treated with the synthesized peptide.



Immunohistochemistry

Image 3. Immunohistochemistry analysis of paraffin-embedded human heart tissue, using M-CK Antibody. The picture on the right is treated with the synthesized peptide.