



[Go to Product page](#)

Datasheet for ABIN1533591
anti-Histone H1 antibody (AA 71-120)

1 Image

Overview

Quantity:	100 µL
Target:	Histone H1 (H1F0)
Binding Specificity:	AA 71-120
Reactivity:	Human
Host:	Rabbit
Clonality:	Polyclonal
Conjugate:	This Histone H1 antibody is un-conjugated
Application:	Western Blotting (WB), ELISA

Product Details

Immunogen:	The antiserum was produced against synthesized peptide derived from human Histone 1F0.
Isotype:	IgG
Specificity:	Histone 1F0 Antibody detects endogenous levels of total Histone 1F0 protein.
Purification:	The antibody was purified from rabbit antiserum by affinity-chromatography using immunogen.
Purity:	> 95 %

Target Details

Target:	Histone H1 (H1F0)
Abstract:	H1F0 Products
Background:	Synonyms: Histone H1.0, Histone H1(0), Histone H1', H1F0, H1FV

Target Details

NCBI Gene Symbol: H1F0

Molecular Weight: 20 kDa

Gene ID: 3005

OMIM: 142708

UniProt: [P07305](#)

Application Details

Application Notes: WB: 1:500~1:1000 ELISA: 1:40000

Comment: Unigene-Number: Hs.723964 (NCBI Gene Symbol: H1F0)

Restrictions: For Research Use only

Handling

Format: Liquid

Concentration: 1 mg/mL

Buffer: phosphate buffered saline (without Mg²⁺ and Ca²⁺), pH 7.4, 150 mM NaCl, 0.02 % sodium azide and 50 % glycerol.

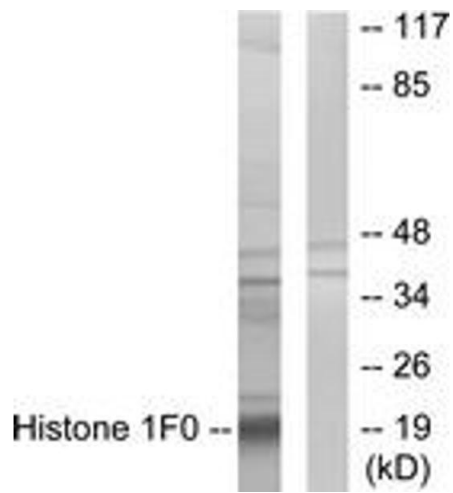
Preservative: Sodium azide

Precaution of Use: This product contains sodium azide: a POISONOUS AND HAZARDOUS SUBSTANCE which should be handled by trained staff only.

Storage: -20 °C

Storage Comment: Stable at -20°C for at least 1 year.

Expiry Date: 12 months



Western Blotting

Image 1. Western blot analysis of extracts from A549 cells, using Histone 1F0 Antibody. The lane on the right is treated with the synthesized peptide.