

Datasheet for ABIN1533592
anti-FES antibody (AA 131-180)



[Go to Product page](#)

1 Image

Overview

| | |
|----------------------|------------------------------------|
| Quantity: | 100 µL |
| Target: | FES |
| Binding Specificity: | AA 131-180 |
| Reactivity: | Human, Mouse |
| Host: | Rabbit |
| Clonality: | Polyclonal |
| Conjugate: | This FES antibody is un-conjugated |
| Application: | Western Blotting (WB), ELISA |

Product Details

| | |
|---------------|---|
| Immunogen: | The antiserum was produced against synthesized peptide derived from human FES. |
| Isotype: | IgG |
| Specificity: | FES Antibody detects endogenous levels of total FES protein. |
| Purification: | The antibody was purified from rabbit antiserum by affinity-chromatography using immunogen. |
| Purity: | > 95 % |

Target Details

| | |
|-------------------|---|
| Target: | FES |
| Alternative Name: | FES (FES Products) |
| Background: | Synonyms: C-FES, FES/FPS, FPS, kinase Fes |

Target Details

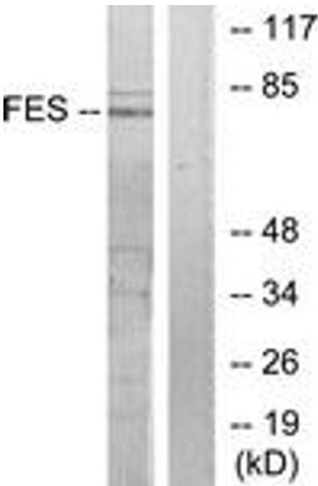
| | |
|-------------------|--|
| | NCBI Gene Symbol: FES |
| Molecular Weight: | 93 kDa |
| Gene ID: | 2242 |
| OMIM: | 190030 |
| UniProt: | P07332 |
| Pathways: | Regulation of Leukocyte Mediated Immunity , Positive Regulation of Immune Effector Process , Signaling Events mediated by VEGFR1 and VEGFR2 |

Application Details

| | |
|--------------------|---|
| Application Notes: | WB: 1:500~1:1000 ELISA: 1:5000 |
| Comment: | Unigene-Number: Hs.7636 (NCBI Gene Symbol: FES) |
| Restrictions: | For Research Use only |

Handling

| | |
|--------------------|---|
| Format: | Liquid |
| Concentration: | 1 mg/mL |
| Buffer: | phosphate buffered saline (without Mg ²⁺ and Ca ²⁺), pH 7.4, 150 mM NaCl, 0.02 % sodium azide and 50 % glycerol. |
| Preservative: | Sodium azide |
| Precaution of Use: | This product contains sodium azide: a POISONOUS AND HAZARDOUS SUBSTANCE which should be handled by trained staff only. |
| Storage: | -20 °C |
| Storage Comment: | Stable at -20°C for at least 1 year. |
| Expiry Date: | 12 months |



Western Blotting

Image 1. Western blot analysis of extracts from HuvEc cells, treated with serum 20% 30', using FES Antibody. The lane on the right is treated with the synthesized peptide.