

Datasheet for ABIN1533605
anti-HKR1 antibody (AA 141-190)[Go to Product page](#)

2 Images

Overview

Quantity:	100 µg
Target:	HKR1
Binding Specificity:	AA 141-190
Reactivity:	Human
Host:	Rabbit
Clonality:	Polyclonal
Conjugate:	This HKR1 antibody is un-conjugated
Application:	Western Blotting (WB), ELISA, Immunofluorescence (IF)

Product Details

Immunogen:	The antiserum was produced against synthesized peptide derived from human HKR1.
Isotype:	IgG
Specificity:	HKR1 Antibody detects endogenous levels of total HKR1 protein.
Purification:	The antibody was purified from rabbit antiserum by affinity-chromatography using immunogen.
Purity:	> 95 %

Target Details

Target:	HKR1
Alternative Name:	HKR1 (HKR1 Products)
Background:	Synonyms: Krueppel-related zinc finger protein 1, Protein HKR1, HKR1

Target Details

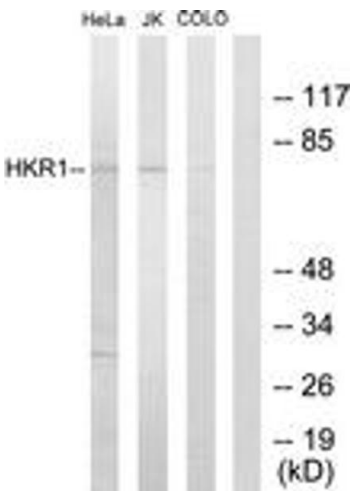
	NCBI Gene Symbol: HKR1
Molecular Weight:	73 kDa
Gene ID:	284459
OMIM:	165250
UniProt:	P10072

Application Details

Application Notes:	WB: 1:500~1:1000 IF: 1:100~1:500 ELISA: 1:1000
Comment:	Unigene-Number: Hs.657027 (NCBI Gene Symbol: HKR1)
Restrictions:	For Research Use only

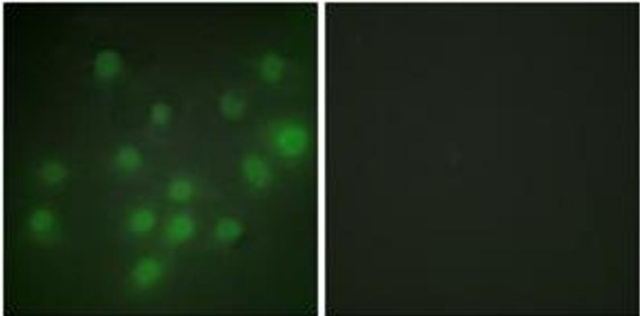
Handling

Format:	Liquid
Concentration:	1 mg/mL
Buffer:	phosphate buffered saline (without Mg ²⁺ and Ca ²⁺), pH 7.4, 150 mM NaCl, 0.02 % sodium azide and 50 % glycerol.
Preservative:	Sodium azide
Precaution of Use:	This product contains sodium azide: a POISONOUS AND HAZARDOUS SUBSTANCE which should be handled by trained staff only.
Storage:	-20 °C
Storage Comment:	Stable at -20°C for at least 1 year.
Expiry Date:	12 months



Western Blotting

Image 1. Western blot analysis of extracts from HeLa/Jurkat/COLO205 cells, using HKR1 Antibody. The lane on the right is treated with the synthesized peptide.



Immunofluorescence

Image 2. Immunofluorescence analysis of HuvEc cells, using HKR1 Antibody. The picture on the right is treated with the synthesized peptide.