

Datasheet for ABIN1533607
anti-NR2F6 antibody (AA 11-60)

3 Images

[Go to Product page](#)

Overview

Quantity:	100 µg
Target:	NR2F6
Binding Specificity:	AA 11-60
Reactivity:	Human, Mouse, Rat
Host:	Rabbit
Clonality:	Polyclonal
Conjugate:	This NR2F6 antibody is un-conjugated
Application:	Western Blotting (WB), ELISA, Immunohistochemistry (IHC), Immunofluorescence (IF)

Product Details

Immunogen:	The antiserum was produced against synthesized peptide derived from human NR2F6.
Isotype:	IgG
Specificity:	NR2F6 Antibody detects endogenous levels of total NR2F6 protein.
Purification:	The antibody was purified from rabbit antiserum by affinity-chromatography using immunogen.
Purity:	> 95 %

Target Details

Target:	NR2F6
Alternative Name:	NR2F6 (NR2F6 Products)
Background:	Synonyms: EAR2, ERBAL2, NR2F6, Orphan nuclear receptor EAR-2, V-erbA related protein EAR-2

Target Details

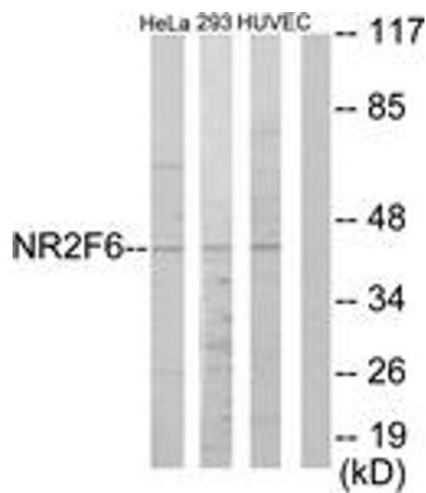
	NCBI Gene Symbol: NR2F6
Molecular Weight:	42 kDa
Gene ID:	2063
OMIM:	132880
UniProt:	P10588
Pathways:	Nuclear Receptor Transcription Pathway , Steroid Hormone Mediated Signaling Pathway , Photoperiodism

Application Details

Application Notes:	WB: 1:500~1:1000 IHC: 1:50~1:100 IF: 1:100~1:500 ELISA: 1:20000
Comment:	Unigene-Number: Hs.466148 (NCBI Gene Symbol: NR2F6)
Restrictions:	For Research Use only

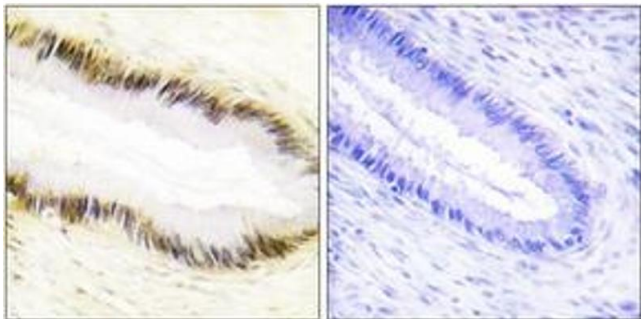
Handling

Format:	Liquid
Concentration:	1 mg/mL
Buffer:	phosphate buffered saline (without Mg ²⁺ and Ca ²⁺), pH 7.4, 150 mM NaCl, 0.02 % sodium azide and 50 % glycerol.
Preservative:	Sodium azide
Precaution of Use:	This product contains sodium azide: a POISONOUS AND HAZARDOUS SUBSTANCE which should be handled by trained staff only.
Storage:	-20 °C
Storage Comment:	Stable at -20°C for at least 1 year.
Expiry Date:	12 months



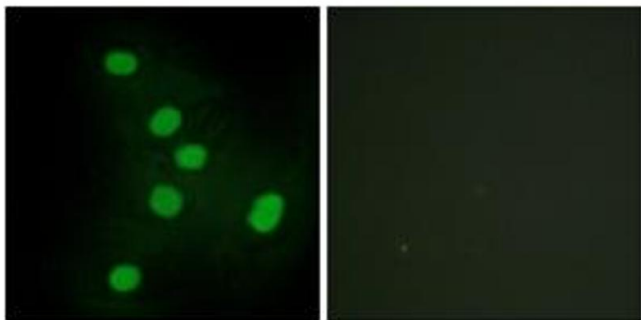
Western Blotting

Image 1. Western blot analysis of extracts from HeLa/HuvEc/293 cells, using NR2F6 Antibody. The lane on the right is treated with the synthesized peptide.



Immunohistochemistry

Image 2. Immunohistochemistry analysis of paraffin-embedded human cervix carcinoma tissue, using NR2F6 Antibody. The picture on the right is treated with the synthesized peptide.



Immunofluorescence

Image 3. Immunofluorescence analysis of HepG2 cells, using NR2F6 Antibody. The picture on the right is treated with the synthesized peptide.