

Datasheet for ABIN1533610
anti-PSKH1 antibody (AA 261-310)[Go to Product page](#)

1 Image

Overview

Quantity:	100 µg
Target:	PSKH1
Binding Specificity:	AA 261-310
Reactivity:	Human, Mouse
Host:	Rabbit
Clonality:	Polyclonal
Conjugate:	This PSKH1 antibody is un-conjugated
Application:	Western Blotting (WB), ELISA

Product Details

Immunogen:	The antiserum was produced against synthesized peptide derived from human KPSH1.
Isotype:	IgG
Specificity:	KPSH1 Antibody detects endogenous levels of total KPSH1 protein.
Purification:	The antibody was purified from rabbit antiserum by affinity-chromatography using immunogen.
Purity:	> 95 %

Target Details

Target:	PSKH1
Abstract:	PSKH1 Products
Background:	Synonyms: Serine/threonine-protein kinase H1, PSK-H1, PSKH1

Target Details

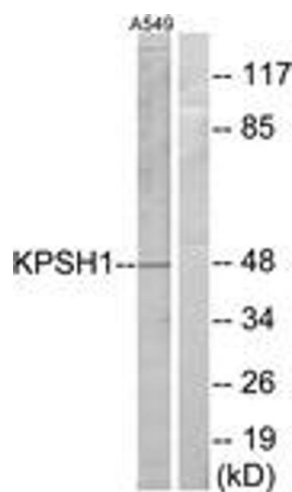
	NCBI Gene Symbol: PSKH1
Molecular Weight:	48 kDa
Gene ID:	5681
OMIM:	177015
UniProt:	P11801

Application Details

Application Notes:	WB: 1:500~1:1000 ELISA: 1:20000
Comment:	Unigene-Number: Hs.513683 (NCBI Gene Symbol: PSKH1)
Restrictions:	For Research Use only

Handling

Format:	Liquid
Concentration:	1 mg/mL
Buffer:	phosphate buffered saline (without Mg ²⁺ and Ca ²⁺), pH 7.4, 150 mM NaCl, 0.02 % sodium azide and 50 % glycerol.
Preservative:	Sodium azide
Precaution of Use:	This product contains sodium azide: a POISONOUS AND HAZARDOUS SUBSTANCE which should be handled by trained staff only.
Storage:	-20 °C
Storage Comment:	Stable at -20°C for at least 1 year.
Expiry Date:	12 months



Western Blotting

Image 1. Western blot analysis of extracts from A549 cells, using KPSH1 Antibody. The lane on the right is treated with the synthesized peptide.