

Datasheet for ABIN1533611
anti-HARS1/Jo-1 antibody (AA 460-509)



[Go to Product page](#)

2 Images

Overview

Quantity:	100 µL
Target:	HARS1/Jo-1 (HARS1)
Binding Specificity:	AA 460-509
Reactivity:	Human, Mouse
Host:	Rabbit
Clonality:	Polyclonal
Conjugate:	This HARS1/Jo-1 antibody is un-conjugated
Application:	Western Blotting (WB), ELISA, Immunofluorescence (IF)

Product Details

Immunogen:	The antiserum was produced against synthesized peptide derived from human HARS.
Isotype:	IgG
Specificity:	HARS Antibody detects endogenous levels of total HARS protein.
Purification:	The antibody was purified from rabbit antiserum by affinity-chromatography using immunogen.
Purity:	> 95 %

Target Details

Target:	HARS1/Jo-1 (HARS1)
Alternative Name:	HARS (HARS1 Products)
Background:	Synonyms: HRS, HisRS, histidine transase, histidine-tRNA ligase, histidyl-tRNA synthetase

Target Details

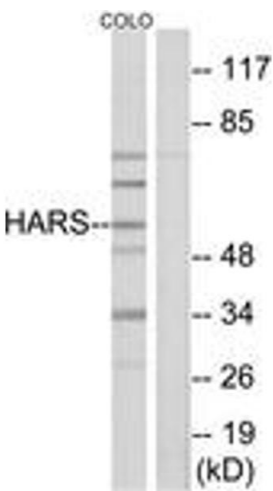
	NCBI Gene Symbol: HARS
Molecular Weight:	57 kDa
Gene ID:	3035
OMIM:	142810
UniProt:	P12081

Application Details

Application Notes:	WB: 1:500~1:1000 IF: 1:100~1:500 ELISA: 1:20000
Comment:	Unigene-Number: Hs.528050 (NCBI Gene Symbol: HARS)
Restrictions:	For Research Use only

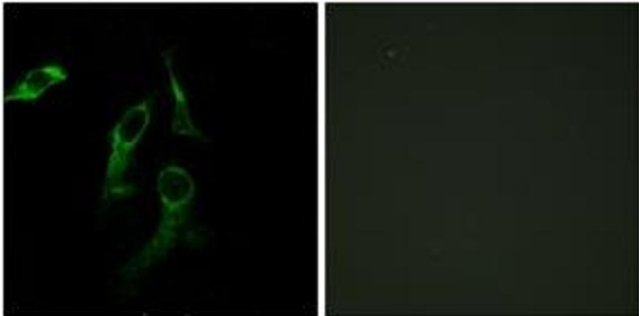
Handling

Format:	Liquid
Concentration:	1 mg/mL
Buffer:	phosphate buffered saline (without Mg ²⁺ and Ca ²⁺), pH 7.4, 150 mM NaCl, 0.02 % sodium azide and 50 % glycerol.
Preservative:	Sodium azide
Precaution of Use:	This product contains sodium azide: a POISONOUS AND HAZARDOUS SUBSTANCE which should be handled by trained staff only.
Storage:	-20 °C
Storage Comment:	Stable at -20°C for at least 1 year.
Expiry Date:	12 months



Western Blotting

Image 1. Western blot analysis of extracts from COLO cells, using HARS Antibody. The lane on the right is treated with the synthesized peptide.



Immunofluorescence

Image 2. Immunofluorescence analysis of HepG2/HeLa cells, using HARS Antibody. The picture on the right is treated with the synthesized peptide.