

Datasheet for ABIN1533617
anti-LOC100281554 antibody (AA 41-90)



[Go to Product page](#)

1 Image

Overview

| | |
|----------------------|------------------------------|
| Quantity: | 100 µL |
| Target: | LOC100281554 (PCO139890) |
| Binding Specificity: | AA 41-90 |
| Reactivity: | Human |
| Host: | Rabbit |
| Clonality: | Polyclonal |
| Application: | ELISA, Western Blotting (WB) |

Product Details

| | |
|---------------|---|
| Immunogen: | The antiserum was produced against synthesized peptide derived from human KAP2. |
| Isotype: | IgG |
| Specificity: | KAP2 Antibody detects endogenous levels of total KAP2 protein. |
| Purification: | The antibody was purified from rabbit antiserum by affinity-chromatography using immunogen. |
| Purity: | > 95 % |

Target Details

| | |
|-------------------|--|
| Target: | LOC100281554 (PCO139890) |
| Alternative Name: | KAP2 |
| Background: | Synonyms: KAP2, MGC3606, PKR2, PRKAR2 NCBI Gene Symbol: PRKAR2A |

Target Details

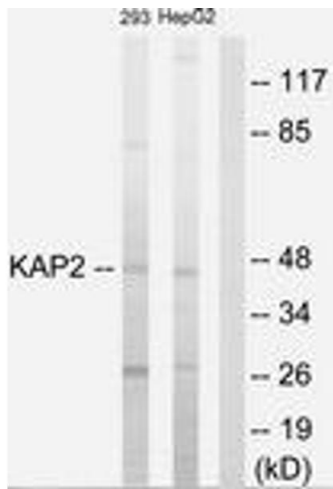
| | |
|-------------------|------------------------|
| Molecular Weight: | 45 kDa |
| Gene ID: | 5576 |
| OMIM: | 176910 |
| UniProt: | P13861 |

Application Details

| | |
|--------------------|---|
| Application Notes: | WB: 1:500~1:1000 ELISA: 1:1000 |
| Comment: | Unigene-Number: Hs.631923 (NCBI Gene Symbol: PRKAR2A) |
| Restrictions: | For Research Use only |

Handling

| | |
|--------------------|---|
| Format: | Liquid |
| Concentration: | 1 mg/mL |
| Buffer: | phosphate buffered saline (without Mg ²⁺ and Ca ²⁺), pH 7.4, 150 mM NaCl, 0.02 % sodium azide and 50 % glycerol. |
| Preservative: | Sodium azide |
| Precaution of Use: | This product contains sodium azide: a POISONOUS AND HAZARDOUS SUBSTANCE which should be handled by trained staff only. |
| Storage: | -20 °C |
| Storage Comment: | Stable at -20°C for at least 1 year. |
| Expiry Date: | 12 months |



Western Blotting

Image 1. Western blot analysis of extracts from 293/HepG2 cells, using KAP2 Antibody. The lane on the right is treated with the synthesized peptide.