



[Go to Product page](#)

Datasheet for ABIN1533624
anti-TCF3 antibody (AA 571-620)

2 Images

Overview

Quantity:	100 µL
Target:	TCF3
Binding Specificity:	AA 571-620
Reactivity:	Human, Mouse, Rat
Host:	Rabbit
Clonality:	Polyclonal
Conjugate:	This TCF3 antibody is un-conjugated
Application:	Western Blotting (WB), ELISA, Immunohistochemistry (IHC)

Product Details

Immunogen:	The antiserum was produced against synthesized peptide derived from human TCF3.
Isotype:	IgG
Specificity:	TCF3 Antibody detects endogenous levels of total TCF3 protein.
Purification:	The antibody was purified from rabbit antiserum by affinity-chromatography using immunogen.
Purity:	> 95 %

Target Details

Target:	TCF3
Alternative Name:	TCF3 (TCF3 Products)
Background:	Synonyms: E12, Immunoglobulin enhancer binding factor E12/E47, Immunoglobulin

Target Details

transcription factor-1, ITF1, Kappa-E2-binding factor, TCF-3, TCF3, TFE2, transcription factor 3 (E2A immunoglobulin enhancer binding factors E12/E47), Transcription factor E2-alpha, Tran
NCBI Gene Symbol: TCF3

Molecular Weight: 67 kDa

Gene ID: 6929

OMIM: 147141

UniProt: [P15923](#)

Pathways: [WNT Signaling](#), [Stem Cell Maintenance](#), [Regulation of Muscle Cell Differentiation](#), [Production of Molecular Mediator of Immune Response](#)

Application Details

Application Notes: WB: 1:500~1:1000 IHC: 1:50~1:100 ELISA: 1:20000

Comment: Unigene-Number: Hs.371282 (NCBI Gene Symbol: TCF3)

Restrictions: For Research Use only

Handling

Format: Liquid

Concentration: 1 mg/mL

Buffer: phosphate buffered saline (without Mg²⁺ and Ca²⁺), pH 7.4, 150 mM NaCl, 0.02 % sodium azide and 50 % glycerol.

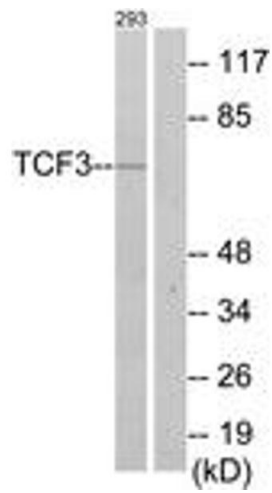
Preservative: Sodium azide

Precaution of Use: This product contains sodium azide: a POISONOUS AND HAZARDOUS SUBSTANCE which should be handled by trained staff only.

Storage: -20 °C

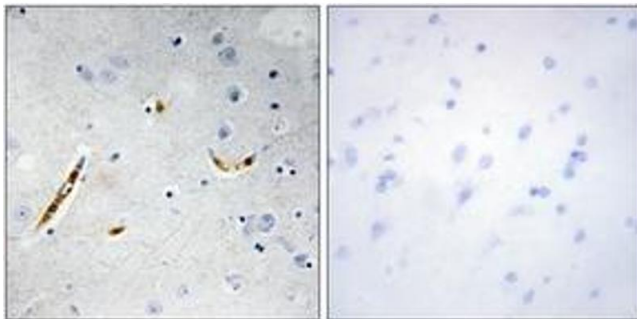
Storage Comment: Stable at -20°C for at least 1 year.

Expiry Date: 12 months



Western Blotting

Image 1. Western blot analysis of extracts from 293 cells, using TCF3 Antibody. The lane on the right is treated with the synthesized peptide.



Immunohistochemistry

Image 2. Immunohistochemistry analysis of paraffin-embedded human brain tissue, using TCF3 Antibody. The picture on the right is treated with the synthesized peptide.