

Datasheet for ABIN1533635
anti-CKMT2 antibody (AA 231-280)



[Go to Product page](#)

2 Images

Overview

Quantity:	100 µL
Target:	CKMT2
Binding Specificity:	AA 231-280
Reactivity:	Human, Mouse, Rat
Host:	Rabbit
Clonality:	Polyclonal
Conjugate:	This CKMT2 antibody is un-conjugated
Application:	Western Blotting (WB), ELISA, Immunofluorescence (IF)

Product Details

Immunogen:	The antiserum was produced against synthesized peptide derived from human CKMT2.
Isotype:	IgG
Specificity:	CKMT2 Antibody detects endogenous levels of total CKMT2 protein.
Purification:	The antibody was purified from rabbit antiserum by affinity-chromatography using immunogen.
Purity:	> 95 %

Target Details

Target:	CKMT2
Alternative Name:	CKMT2 (CKMT2 Products)
Background:	Synonyms: Creatine kinase sarcomeric mitochondrial, S-MtCK, Basic-type mitochondrial

Target Details

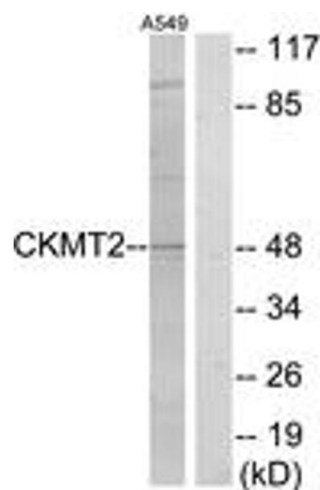
	creatine kinase, Mib-CK NCBI Gene Symbol: CKMT2
Molecular Weight:	47 kDa
Gene ID:	1160
OMIM:	123295
UniProt:	P17540

Application Details

Application Notes:	WB: 1:500~1:1000 IF: 1:100~1:500 ELISA: 1:40000
Comment:	Unigene-Number: Hs.80691 (NCBI Gene Symbol: CKMT2)
Restrictions:	For Research Use only

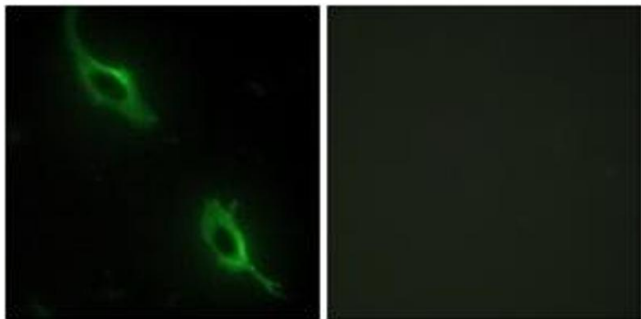
Handling

Format:	Liquid
Concentration:	1 mg/mL
Buffer:	phosphate buffered saline (without Mg2+ and Ca2+), pH 7.4, 150 mM NaCl, 0.02 % sodium azide and 50 % glycerol.
Preservative:	Sodium azide
Precaution of Use:	This product contains sodium azide: a POISONOUS AND HAZARDOUS SUBSTANCE which should be handled by trained staff only.
Storage:	-20 °C
Storage Comment:	Stable at -20°C for at least 1 year.
Expiry Date:	12 months



Western Blotting

Image 1. Western blot analysis of extracts from A549 cells, using CKMT2 Antibody. The lane on the right is treated with the synthesized peptide.



Immunofluorescence

Image 2. Immunofluorescence analysis of NIH-3T3 cells, using CKMT2 Antibody. The picture on the right is treated with the synthesized peptide.