

Datasheet for ABIN1533650
anti-TFE3 antibody (AA 101-150)

2 Images

[Go to Product page](#)

Overview

Quantity:	100 µg
Target:	TFE3
Binding Specificity:	AA 101-150
Reactivity:	Human, Mouse
Host:	Rabbit
Clonality:	Polyclonal
Conjugate:	This TFE3 antibody is un-conjugated
Application:	Western Blotting (WB), ELISA, Immunohistochemistry (IHC)

Product Details

Immunogen:	The antiserum was produced against synthesized peptide derived from human TFE3.
Isotype:	IgG
Specificity:	TFE3 Antibody detects endogenous levels of total TFE3 protein.
Purification:	The antibody was purified from rabbit antiserum by affinity-chromatography using immunogen.
Purity:	> 95 %

Target Details

Target:	TFE3
Alternative Name:	TFE3 (TFE3 Products)
Background:	Synonyms: transcription factor binding to IGHM enhancer 3

Target Details

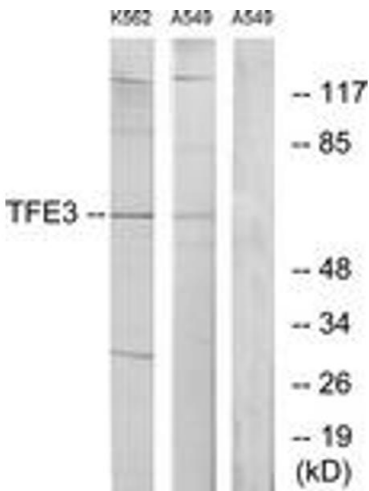
	NCBI Gene Symbol: TFE3
Molecular Weight:	61 kDa
Gene ID:	7030
OMIM:	314310
UniProt:	P19532

Application Details

Application Notes:	WB: 1:500~1:1000 IHC: 1:50~1:100 ELISA: 1:20000
Comment:	Unigene-Number: Hs.274184 (NCBI Gene Symbol: TFE3)
Restrictions:	For Research Use only

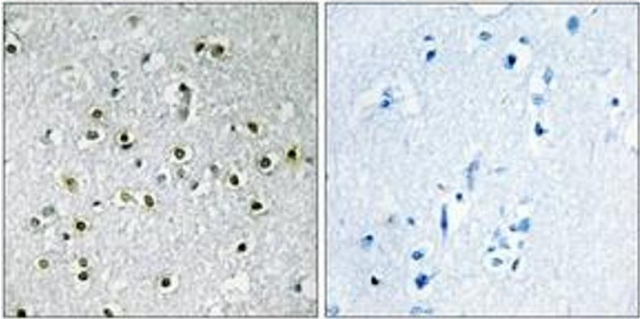
Handling

Format:	Liquid
Concentration:	1 mg/mL
Buffer:	phosphate buffered saline (without Mg ²⁺ and Ca ²⁺), pH 7.4, 150 mM NaCl, 0.02 % sodium azide and 50 % glycerol.
Preservative:	Sodium azide
Precaution of Use:	This product contains sodium azide: a POISONOUS AND HAZARDOUS SUBSTANCE which should be handled by trained staff only.
Storage:	-20 °C
Storage Comment:	Stable at -20°C for at least 1 year.
Expiry Date:	12 months



Western Blotting

Image 1. Western blot analysis of extracts from K562/A549 cells, using TFE3 Antibody. The lane on the right is treated with the synthesized peptide.



Immunohistochemistry

Image 2. Immunohistochemistry analysis of paraffin-embedded human brain tissue, using TFE3 Antibody. The picture on the right is treated with the synthesized peptide.