



[Go to Product page](#)

Datasheet for ABIN1533655  
**anti-CSRP1 antibody (AA 51-100)**

2 Images

Overview

Quantity:	100 µg
Target:	CSRP1
Binding Specificity:	AA 51-100
Reactivity:	Human, Mouse, Rat
Host:	Rabbit
Clonality:	Polyclonal
Conjugate:	This CSRP1 antibody is un-conjugated
Application:	Western Blotting (WB), Immunohistochemistry (IHC), ELISA

Product Details

Immunogen:	The antiserum was produced against synthesized peptide derived from human CRP1.
Isotype:	IgG
Specificity:	CRP1 Antibody detects endogenous levels of total CRP1 protein.
Purification:	The antibody was purified from rabbit antiserum by affinity-chromatography using immunogen.
Purity:	> 95 %

Target Details

Target:	CSRP1
Alternative Name:	CRP1 ( <a href="#">CSRP1 Products</a> )
Background:	Synonyms: CRP, CRP1, CSRP, CYRP, cysteine and glycine-rich 1

## Target Details

---

NCBI Gene Symbol: CSRP1

Molecular Weight: 20 kDa

Gene ID: 1465

OMIM: 123876

UniProt: [P21291](#)

## Application Details

---

Application Notes: WB: 1:500~1:1000 IHC: 1:50~1:100 ELISA: 1:20000

Comment: Unigene-Number: Hs.108080 (NCBI Gene Symbol: CSRP1)

Restrictions: For Research Use only

## Handling

---

Format: Liquid

Concentration: 1 mg/mL

Buffer: phosphate buffered saline (without Mg<sup>2+</sup> and Ca<sup>2+</sup>), pH 7.4, 150 mM NaCl, 0.02 % sodium azide and 50 % glycerol.

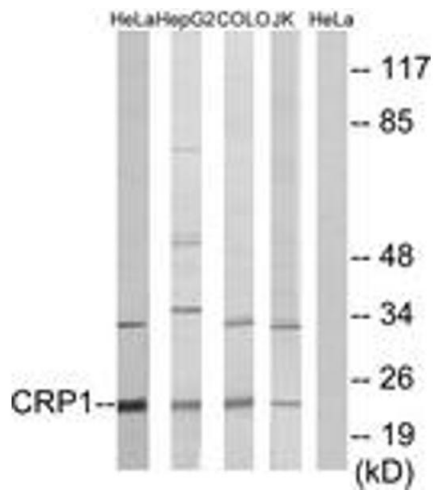
Preservative: Sodium azide

Precaution of Use: This product contains sodium azide: a POISONOUS AND HAZARDOUS SUBSTANCE which should be handled by trained staff only.

Storage: -20 °C

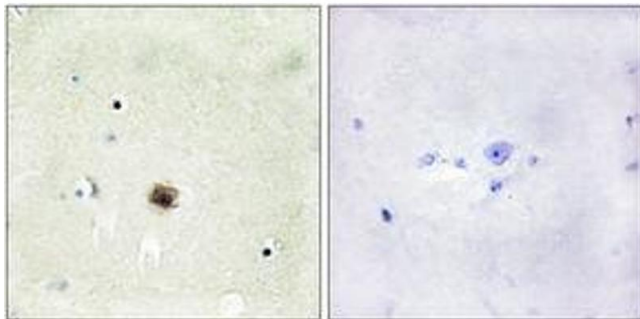
Storage Comment: Stable at -20°C for at least 1 year.

Expiry Date: 12 months



### Western Blotting

**Image 1.** Western blot analysis of extracts from HeLa/HepG2/COLO/Jurkat cells, using CRP1 Antibody. The lane on the right is treated with the synthesized peptide.



### Immunohistochemistry

**Image 2.** Immunohistochemistry analysis of paraffin-embedded human brain tissue, using CRP1 Antibody. The picture on the right is treated with the synthesized peptide.