



[Go to Product page](#)

Datasheet for ABIN1533670
anti-Grr1p antibody (AA 1-50)

2 Images

Overview

Quantity:	100 µg
Target:	Grr1p (GRR1)
Binding Specificity:	AA 1-50
Reactivity:	Human, Mouse, Rat
Host:	Rabbit
Clonality:	Polyclonal
Conjugate:	This Grr1p antibody is un-conjugated
Application:	ELISA, Western Blotting (WB), Immunofluorescence (IF)

Product Details

Immunogen:	The antiserum was produced against synthesized peptide derived from human COT2.
Isotype:	IgG
Specificity:	COT2 Antibody detects endogenous levels of total COT2 protein.
Purification:	The antibody was purified from rabbit antiserum by affinity-chromatography using immunogen.
Purity:	> 95 %

Target Details

Target:	Grr1p (GRR1)
Alternative Name:	COT2 (GRR1 Products)
Background:	Synonyms: apolipoprotein AI regulatory 1, ARP-1, COT2, COUP transcription factor 2, COUP-TF

Target Details

II, COUP-TF2
NCBI Gene Symbol: NR2F2

Molecular Weight: 45 kDa

Gene ID: 7026

OMIM: 107773

UniProt: [P24468](#)

Application Details

Application Notes: WB: 1:500~1:1000 IF: 1:100~1:500 ELISA: 1:10000

Comment: Unigene-Number: Hs.347991, Hs.724046 (NCBI Gene Symbol: NR2F2)

Restrictions: For Research Use only

Handling

Format: Liquid

Concentration: 1 mg/mL

Buffer: phosphate buffered saline (without Mg²⁺ and Ca²⁺), pH 7.4, 150 mM NaCl, 0.02 % sodium azide and 50 % glycerol.

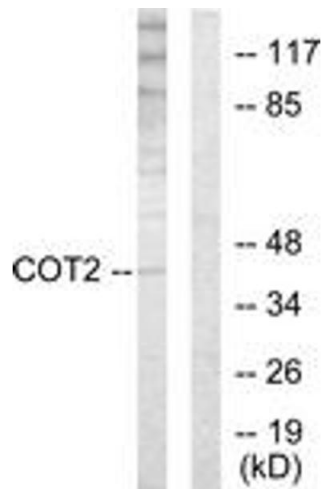
Preservative: Sodium azide

Precaution of Use: This product contains sodium azide: a POISONOUS AND HAZARDOUS SUBSTANCE which should be handled by trained staff only.

Storage: -20 °C

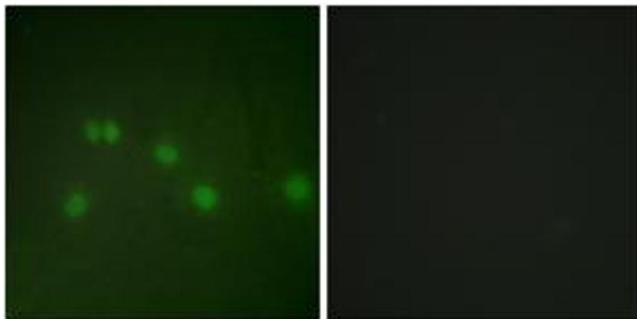
Storage Comment: Stable at -20°C for at least 1 year.

Expiry Date: 12 months



Western Blotting

Image 1. Western blot analysis of extracts from HuvEc cells, using COT2 Antibody. The lane on the right is treated with the synthesized peptide.



Immunofluorescence

Image 2. Immunofluorescence analysis of HuvEc cells, using COT2 Antibody. The picture on the right is treated with the synthesized peptide.