

Datasheet for ABIN1533679
anti-MARK3 antibody (AA 1-50)



[Go to Product page](#)

2 Images

Overview

| | |
|----------------------|--|
| Quantity: | 100 µL |
| Target: | MARK3 |
| Binding Specificity: | AA 1-50 |
| Reactivity: | Human, Mouse, Rat |
| Host: | Rabbit |
| Clonality: | Polyclonal |
| Application: | Western Blotting (WB), ELISA, Immunohistochemistry (IHC) |

Product Details

| | |
|---------------|---|
| Immunogen: | The antiserum was produced against synthesized peptide derived from human MARK3. |
| Isotype: | IgG |
| Specificity: | MARK3 Antibody detects endogenous levels of total MARK3 protein. |
| Purification: | The antibody was purified from rabbit antiserum by affinity-chromatography using immunogen. |
| Purity: | > 95 % |

Target Details

| | |
|-------------------|--|
| Target: | MARK3 |
| Alternative Name: | MARK3 (MARK3 Products) |
| Background: | Synonyms: C-TAK1, Cdc25C- associated protein kinase 1, MAP/microtubule affinity-regulating kinase 3, Protein kinase STK10, Ser/Thr protein kinase PAR-1, Serine/threonine protein kinase |

Target Details

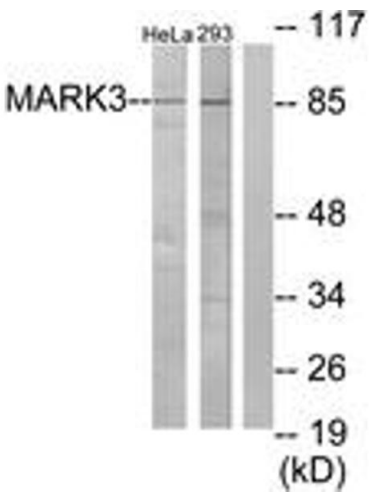
| | |
|-------------------|--|
| | p78, cTAK1 NCBI Gene Symbol: MARK3 |
| Molecular Weight: | 86 kDa |
| Gene ID: | 4140 |
| OMIM: | 602678 |
| UniProt: | P27448 |
| Pathways: | SARS-CoV-2 Protein Interactome |

Application Details

| | |
|--------------------|--|
| Application Notes: | WB: 1:500~1:1000 IHC: 1:50~1:100 ELISA: 1:5000 |
| Comment: | Unigene-Number: Hs.35828 (NCBI Gene Symbol: MARK3) |
| Restrictions: | For Research Use only |

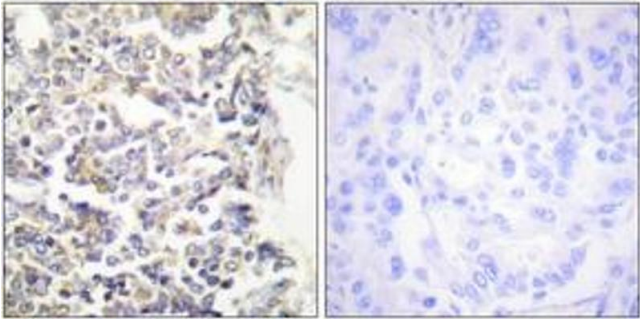
Handling

| | |
|--------------------|---|
| Format: | Liquid |
| Concentration: | 1 mg/mL |
| Buffer: | phosphate buffered saline (without Mg ²⁺ and Ca ²⁺), pH 7.4, 150 mM NaCl, 0.02 % sodium azide and 50 % glycerol. |
| Preservative: | Sodium azide |
| Precaution of Use: | This product contains sodium azide: a POISONOUS AND HAZARDOUS SUBSTANCE which should be handled by trained staff only. |
| Storage: | -20 °C |
| Storage Comment: | Stable at -20°C for at least 1 year. |
| Expiry Date: | 12 months |



Western Blotting

Image 1. Western blot analysis of extracts from HeLa/293 cells, using MARK3 Antibody. The lane on the right is treated with the synthesized peptide.



Immunohistochemistry (Paraffin-embedded Sections)

Image 2. Immunohistochemistry analysis of paraffin-embedded human lung carcinoma tissue, using MARK3 Antibody. The picture on the right is treated with the synthesized peptide.