



[Go to Product page](#)

Datasheet for ABIN1533692
anti-NKTR antibody (AA 784-833)

2 Images

Overview

Quantity:	100 µL
Target:	NKTR
Binding Specificity:	AA 784-833
Reactivity:	Human
Host:	Rabbit
Clonality:	Polyclonal
Conjugate:	This NKTR antibody is un-conjugated
Application:	ELISA, Immunohistochemistry (IHC), Immunofluorescence (IF)

Product Details

Immunogen:	The antiserum was produced against synthesized peptide derived from human NKTR.
Isotype:	IgG
Specificity:	NKTR Antibody detects endogenous levels of total NKTR protein.
Purification:	The antibody was purified from rabbit antiserum by affinity-chromatography using immunogen.
Purity:	> 95 %

Target Details

Target:	NKTR
Alternative Name:	NKTR (NKTR Products)
Background:	Synonyms: NK-TR protein, NK-tumor recognition protein, Natural-killer cells cyclophilin-related

Target Details

protein
NCBI Gene Symbol: NKTR

Molecular Weight: 165 kDa

Gene ID: 4820

OMIM: 161565

UniProt: [P30414](#)

Application Details

Application Notes: IHC: 1:50~1:100 IF: 1:100~1:500 ELISA: 1:5000

Comment: Unigene-Number: Hs.529509 (NCBI Gene Symbol: NKTR)

Restrictions: For Research Use only

Handling

Format: Liquid

Concentration: 1 mg/mL

Buffer: phosphate buffered saline (without Mg²⁺ and Ca²⁺), pH 7.4, 150 mM NaCl, 0.02 % sodium azide and 50 % glycerol.

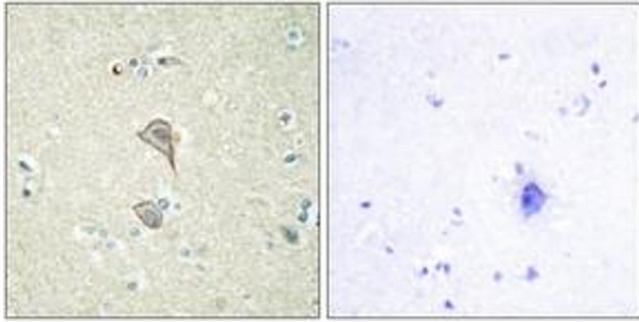
Preservative: Sodium azide

Precaution of Use: This product contains sodium azide: a POISONOUS AND HAZARDOUS SUBSTANCE which should be handled by trained staff only.

Storage: -20 °C

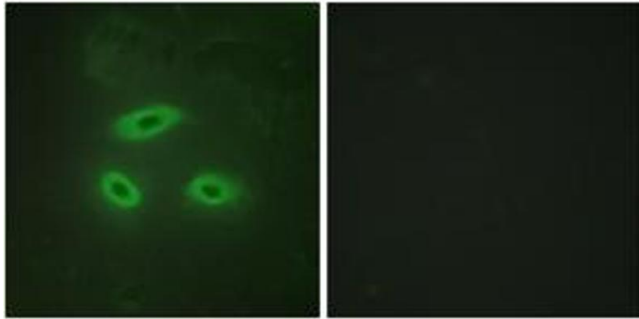
Storage Comment: Stable at -20°C for at least 1 year.

Expiry Date: 12 months



Immunohistochemistry

Image 1. Immunohistochemistry analysis of paraffin-embedded human brain tissue, using NKTR Antibody. The picture on the right is treated with the synthesized peptide.



Immunofluorescence

Image 2. Immunofluorescence analysis of HeLa cells, using NKTR Antibody. The picture on the right is treated with the synthesized peptide.