

Datasheet for ABIN1533702
anti-CSTF2 antibody (AA 11-60)



[Go to Product page](#)

2 Images

Overview

Quantity:	100 µL
Target:	CSTF2
Binding Specificity:	AA 11-60
Reactivity:	Human, Mouse
Host:	Rabbit
Clonality:	Polyclonal
Conjugate:	This CSTF2 antibody is un-conjugated
Application:	Western Blotting (WB), ELISA, Immunofluorescence (IF)

Product Details

Immunogen:	The antiserum was produced against synthesized peptide derived from human CSTF2.
Isotype:	IgG
Specificity:	CSTF2 Antibody detects endogenous levels of total CSTF2 protein.
Purification:	The antibody was purified from rabbit antiserum by affinity-chromatography using immunogen.
Purity:	> 95 %

Target Details

Target:	CSTF2
Alternative Name:	CSTF2 (CSTF2 Products)
Background:	Synonyms: Cleavage stimulation factor 64 kDa subunit, CSTF 64 kDa subunit, CstF-64, CF-1 64

Target Details

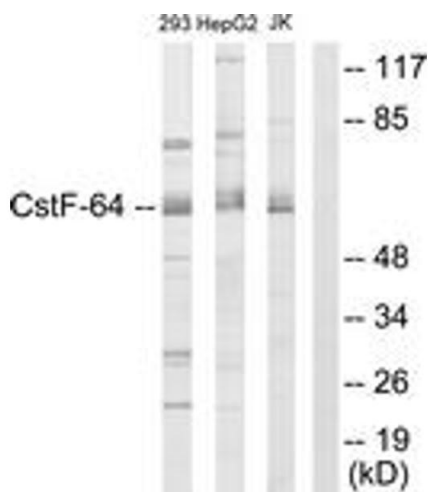
	kDa subunit, CSTF2
	NCBI Gene Symbol: CSTF2
Molecular Weight:	60 kDa
Gene ID:	1478
OMIM:	600368
UniProt:	P33240

Application Details

Application Notes:	WB: 1:500~1:1000 IF: 1:100~1:500 ELISA: 1:10000
Comment:	Unigene-Number: Hs.132370 (NCBI Gene Symbol: CSTF2)
Restrictions:	For Research Use only

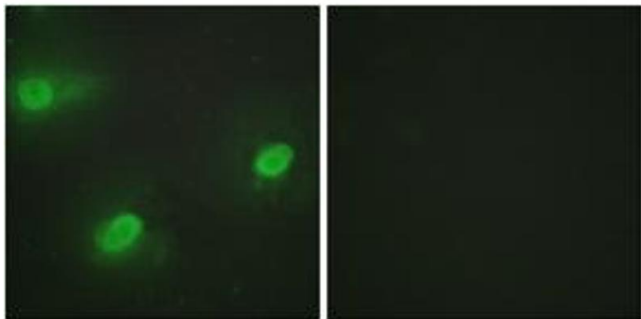
Handling

Format:	Liquid
Concentration:	1 mg/mL
Buffer:	phosphate buffered saline (without Mg2+ and Ca2+), pH 7.4, 150 mM NaCl, 0.02 % sodium azide and 50 % glycerol.
Preservative:	Sodium azide
Precaution of Use:	This product contains sodium azide: a POISONOUS AND HAZARDOUS SUBSTANCE which should be handled by trained staff only.
Storage:	-20 °C
Storage Comment:	Stable at -20°C for at least 1 year.
Expiry Date:	12 months



Western Blotting

Image 1. Western blot analysis of extracts from 293/K562/Jurkat cells, using CSTF2 Antibody. The lane on the right is treated with the synthesized peptide.



Immunofluorescence

Image 2. Immunofluorescence analysis of HeLa cells, using CSTF2 Antibody. The picture on the right is treated with the synthesized peptide.