

Datasheet for ABIN1533703
anti-CKS2 antibody (AA 1-50)



[Go to Product page](#)

1 Image

Overview

Quantity:	100 µL
Target:	CKS2
Binding Specificity:	AA 1-50
Reactivity:	Human, Mouse
Host:	Rabbit
Clonality:	Polyclonal
Conjugate:	This CKS2 antibody is un-conjugated
Application:	ELISA, Immunohistochemistry (IHC)

Product Details

Immunogen:	The antiserum was produced against synthesized peptide derived from human CKS2.
Isotype:	IgG
Specificity:	CKS2 Antibody detects endogenous levels of total CKS2 protein.
Purification:	The antibody was purified from rabbit antiserum by affinity-chromatography using immunogen.
Purity:	> 95 %

Target Details

Target:	CKS2
Alternative Name:	CKS2 (CKS2 Products)
Background:	Synonyms: Cyclin-dependent kinases regulatory subunit 2, CKS-2, CKS2

Target Details

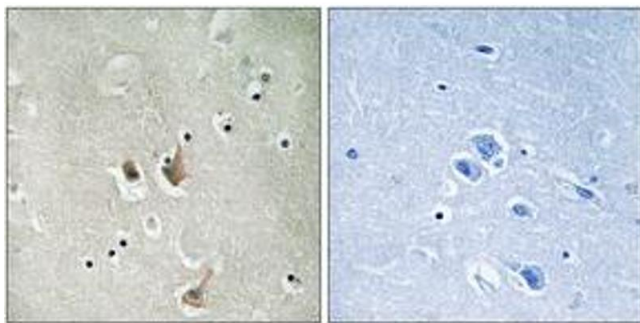
	NCBI Gene Symbol: CKS2
Molecular Weight:	9 kDa
Gene ID:	1164
OMIM:	116901
UniProt:	P33552

Application Details

Application Notes:	IHC: 1:50~1:100 ELISA: 1:20000
Comment:	Unigene-Number: Hs.83758 (NCBI Gene Symbol: CKS2)
Restrictions:	For Research Use only

Handling

Format:	Liquid
Concentration:	1 mg/mL
Buffer:	phosphate buffered saline (without Mg ²⁺ and Ca ²⁺), pH 7.4, 150 mM NaCl, 0.02 % sodium azide and 50 % glycerol.
Preservative:	Sodium azide
Precaution of Use:	This product contains sodium azide: a POISONOUS AND HAZARDOUS SUBSTANCE which should be handled by trained staff only.
Storage:	-20 °C
Storage Comment:	Stable at -20°C for at least 1 year.
Expiry Date:	12 months



Immunohistochemistry

Image 1. Immunohistochemistry analysis of paraffin-embedded human brain tissue, using CKS2 Antibody. The picture on the right is treated with the synthesized peptide.