

Datasheet for ABIN1533704
anti-GRK5 antibody (AA 351-400)



[Go to Product page](#)

1 Image

Overview

Quantity:	100 µL
Target:	GRK5
Binding Specificity:	AA 351-400
Reactivity:	Human, Mouse, Rat
Host:	Rabbit
Clonality:	Polyclonal
Conjugate:	This GRK5 antibody is un-conjugated
Application:	Western Blotting (WB), ELISA

Product Details

Immunogen:	The antiserum was produced against synthesized peptide derived from human GRK5.
Isotype:	IgG
Specificity:	GRK5 Antibody detects endogenous levels of total GRK5 protein.
Purification:	The antibody was purified from rabbit antiserum by affinity-chromatography using immunogen.
Purity:	> 95 %

Target Details

Target:	GRK5
Alternative Name:	GRK5 (GRK5 Products)
Background:	Synonyms: G-protein-coupled receptor kinase 5, GPRK5, kinase GRK5

Target Details

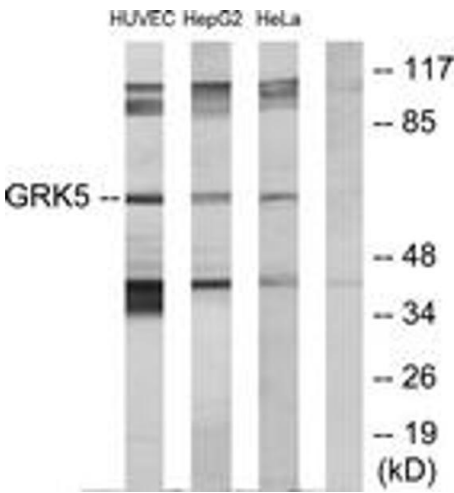
	NCBI Gene Symbol: GRK5
Molecular Weight:	67 kDa
Gene ID:	2869
OMIM:	600870
UniProt:	P34947
Pathways:	Myometrial Relaxation and Contraction, Regulation of G-Protein Coupled Receptor Protein Signaling

Application Details

Application Notes:	WB: 1:500~1:1000 ELISA: 1:10000
Comment:	Unigene-Number: Hs.524625 (NCBI Gene Symbol: GRK5)
Restrictions:	For Research Use only

Handling

Format:	Liquid
Concentration:	1 mg/mL
Buffer:	phosphate buffered saline (without Mg ²⁺ and Ca ²⁺), pH 7.4, 150 mM NaCl, 0.02 % sodium azide and 50 % glycerol.
Preservative:	Sodium azide
Precaution of Use:	This product contains sodium azide: a POISONOUS AND HAZARDOUS SUBSTANCE which should be handled by trained staff only.
Storage:	-20 °C
Storage Comment:	Stable at -20°C for at least 1 year.
Expiry Date:	12 months



Western Blotting

Image 1. Western blot analysis of extracts from HeLa/HepG2/HuvEc cells, using GRK5 Antibody. The lane on the right is treated with the synthesized peptide.