

Datasheet for ABIN1533707
anti-RORA antibody (AA 6-55)



[Go to Product page](#)

2 Images

Overview

Quantity:	100 µL
Target:	RORA
Binding Specificity:	AA 6-55
Reactivity:	Human
Host:	Rabbit
Clonality:	Polyclonal
Conjugate:	This RORA antibody is un-conjugated
Application:	Western Blotting (WB), ELISA, Immunohistochemistry (IHC)

Product Details

Immunogen:	The antiserum was produced against synthesized peptide derived from human RORA.
Isotype:	IgG
Specificity:	RORA Antibody detects endogenous levels of total RORA protein.
Purification:	The antibody was purified from rabbit antiserum by affinity-chromatography using immunogen.
Purity:	> 95 %

Target Details

Target:	RORA
Alternative Name:	RORA (RORA Products)
Background:	Synonyms: Nuclear receptor ROR-alpha, Retinoid-related orphan receptor-alpha, Nuclear

Target Details

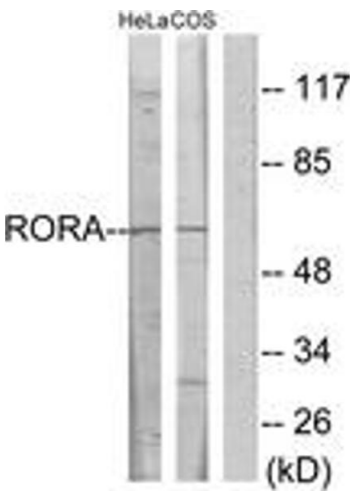
	receptor RZR-alpha, Nuclear receptor subfamily 1 group F member 1, NR1F1, RZRA NCBI Gene Symbol: RORA
Molecular Weight:	63 kDa
Gene ID:	6095
OMIM:	600825
UniProt:	P35398
Pathways:	Nuclear Receptor Transcription Pathway , Steroid Hormone Mediated Signaling Pathway , Regulation of Lipid Metabolism by PPARalpha

Application Details

Application Notes:	WB: 1:500~1:1000 IHC: 1:50~1:100 ELISA: 1:40000
Comment:	Unigene-Number: Hs.560343, Hs.655155 (NCBI Gene Symbol: RORA)
Restrictions:	For Research Use only

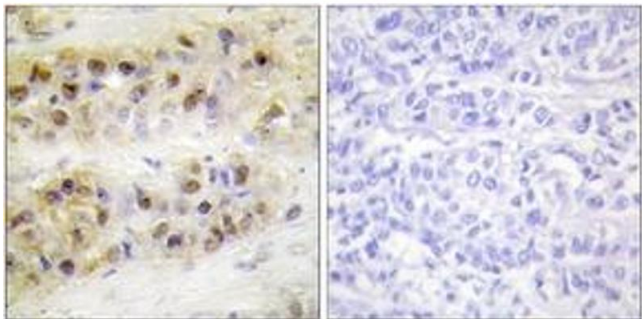
Handling

Format:	Liquid
Concentration:	1 mg/mL
Buffer:	phosphate buffered saline (without Mg2+ and Ca2+), pH 7.4, 150 mM NaCl, 0.02 % sodium azide and 50 % glycerol.
Preservative:	Sodium azide
Precaution of Use:	This product contains sodium azide: a POISONOUS AND HAZARDOUS SUBSTANCE which should be handled by trained staff only.
Storage:	-20 °C
Storage Comment:	Stable at -20°C for at least 1 year.
Expiry Date:	12 months



Western Blotting

Image 1. Western blot analysis of extracts from HeLa/COS7 cells, using RORA Antibody. The lane on the right is treated with the synthesized peptide.



Immunohistochemistry

Image 2. Immunohistochemistry analysis of paraffin-embedded human breast carcinoma tissue, using RORA Antibody. The picture on the right is treated with the synthesized peptide.