

Datasheet for ABIN1533709
anti-ACTN2/3 antibody (AA 31-80)



[Go to Product page](#)

3 Images

Overview

Quantity:	100 µL
Target:	ACTN2/3
Binding Specificity:	AA 31-80
Reactivity:	Human, Mouse, Rat
Host:	Rabbit
Clonality:	Polyclonal
Conjugate:	This ACTN2/3 antibody is un-conjugated
Application:	Western Blotting (WB), ELISA, Immunohistochemistry (IHC), Immunofluorescence (IF)

Product Details

Immunogen:	The antiserum was produced against synthesized peptide derived from human Actinin alpha-2/3.
Isotype:	IgG
Specificity:	Actinin alpha-2/3 Antibody detects endogenous levels of total Actinin alpha-2/3 protein.
Purification:	The antibody was purified from rabbit antiserum by affinity-chromatography using immunogen.
Purity:	> 95 %

Target Details

Target:	ACTN2/3
Abstract:	ACTN2/3 Products

Target Details

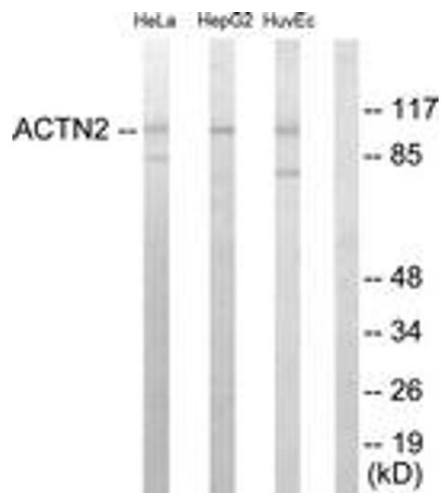
Background:	Synonyms: Alpha-actinin-2, Alpha-actinin skeletal muscle isoform 2, F-actin cross-linking protein, ACTN2, Alpha-actinin-3, Alpha-actinin skeletal muscle isoform 3, F-actin cross-linking protein, ACTN3 NCBI Gene Symbol: ACTN2
Molecular Weight:	103 kDa
Gene ID:	88, 89
OMIM:	102573
UniProt:	P35609 , Q08043

Application Details

Application Notes:	WB: 1:500~1:1000 IHC: 1:50~1:100 IF: 1:100~1:500 ELISA: 1:20000
Comment:	Unigene-Number: Hs.498178, Hs.654432 (NCBI Gene Symbol: ACTN2)
Restrictions:	For Research Use only

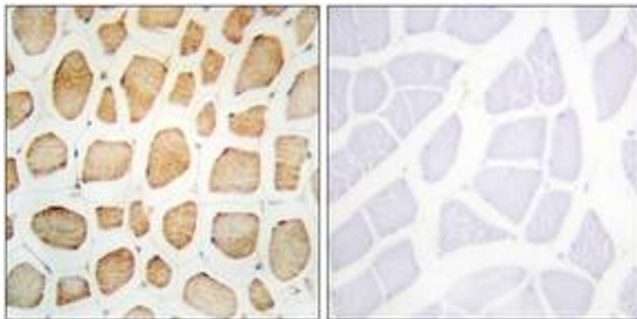
Handling

Format:	Liquid
Concentration:	1 mg/mL
Buffer:	phosphate buffered saline (without Mg ²⁺ and Ca ²⁺), pH 7.4, 150 mM NaCl, 0.02 % sodium azide and 50 % glycerol.
Preservative:	Sodium azide
Precaution of Use:	This product contains sodium azide: a POISONOUS AND HAZARDOUS SUBSTANCE which should be handled by trained staff only.
Storage:	-20 °C
Storage Comment:	Stable at -20°C for at least 1 year.
Expiry Date:	12 months



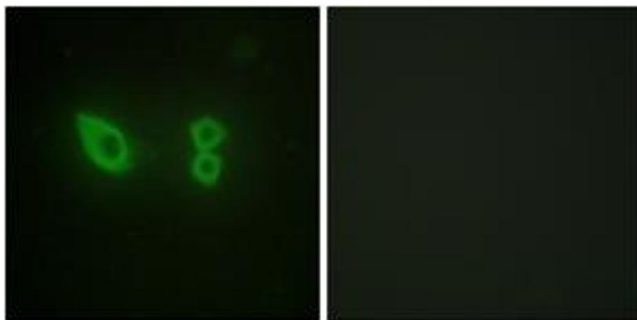
Western Blotting

Image 1. Western blot analysis of extracts from HepG2/HeLa/HuvEc cells, using Actinin alpha-2/3 Antibody. The lane on the right is treated with the synthesized peptide.



Immunohistochemistry

Image 2. Immunohistochemistry analysis of paraffin-embedded human skeletal muscle tissue, using Actinin alpha-2/3 Antibody. The picture on the right is treated with the synthesized peptide.



Immunofluorescence

Image 3. Immunofluorescence analysis of HeLa cells, using Actinin alpha-2/3 Antibody. The picture on the right is treated with the synthesized peptide.