

Datasheet for ABIN1533716

anti-Activin A Receptor Type IB/ALK-4 antibody (AA 73-122)[Go to Product page](#)**2** Images

Overview

Quantity:	100 µL
Target:	Activin A Receptor Type IB/ALK-4 (ACVR1B)
Binding Specificity:	AA 73-122
Reactivity:	Human, Mouse, Rat
Host:	Rabbit
Clonality:	Polyclonal
Conjugate:	This Activin A Receptor Type IB/ALK-4 antibody is un-conjugated
Application:	Western Blotting (WB), ELISA, Immunofluorescence (IF)

Product Details

Immunogen:	The antiserum was produced against synthesized peptide derived from human ACV1B.
Isotype:	IgG
Specificity:	ACV1B Antibody detects endogenous levels of total ACV1B protein.
Purification:	The antibody was purified from rabbit antiserum by affinity-chromatography using immunogen.
Purity:	> 95 %

Target Details

Target:	Activin A Receptor Type IB/ALK-4 (ACVR1B)
Alternative Name:	ACV1B (ACVR1B Products)
Background:	Synonyms: ACTR-IB, ACV1B, ACVR1B, ACVRLK4, Activin receptor-like kinase 4, KIR2, SKR2,

Target Details

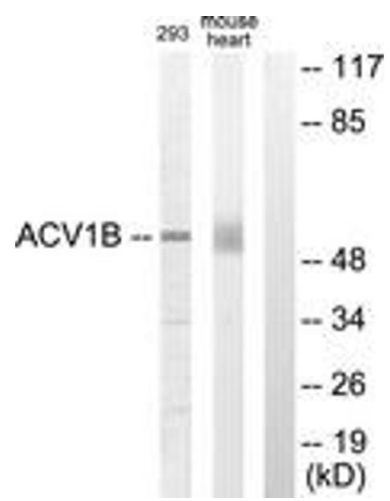
	Serine/threonine-protein kinase receptor R2 precursor NCBI Gene Symbol: ACVR1B
Molecular Weight:	56 kDa
Gene ID:	91
OMIM:	601300
UniProt:	P36896

Application Details

Application Notes:	WB: 1:500~1:1000 IF: 1:100~1:500 ELISA: 1:5000
Comment:	Unigene-Number: Hs.438918 (NCBI Gene Symbol: ACVR1B)
Restrictions:	For Research Use only

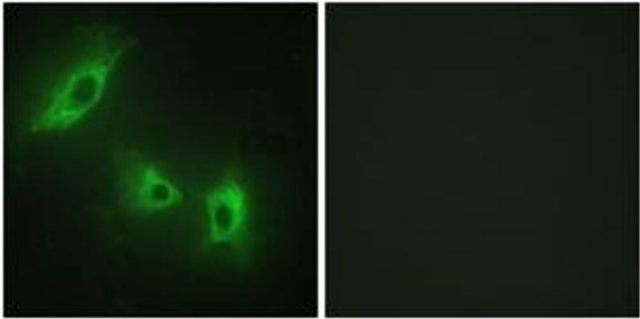
Handling

Format:	Liquid
Concentration:	1 mg/mL
Buffer:	phosphate buffered saline (without Mg ²⁺ and Ca ²⁺), pH 7.4, 150 mM NaCl, 0.02 % sodium azide and 50 % glycerol.
Preservative:	Sodium azide
Precaution of Use:	This product contains sodium azide: a POISONOUS AND HAZARDOUS SUBSTANCE which should be handled by trained staff only.
Storage:	-20 °C
Storage Comment:	Stable at -20°C for at least 1 year.
Expiry Date:	12 months



Western Blotting

Image 1. Western blot analysis of extracts from 293/mouse liver cells, using ACV1B Antibody. The lane on the right is treated with the synthesized peptide.



Immunofluorescence

Image 2. Immunofluorescence analysis of HeLa cells, using ACV1B Antibody. The picture on the right is treated with the synthesized peptide.