

Datasheet for ABIN1533717
anti-LTBR antibody (AA 11-60)



[Go to Product page](#)

2 Images

Overview

| | |
|----------------------|---|
| Quantity: | 100 µL |
| Target: | LTBR |
| Binding Specificity: | AA 11-60 |
| Reactivity: | Human, Mouse |
| Host: | Rabbit |
| Clonality: | Polyclonal |
| Conjugate: | This LTBR antibody is un-conjugated |
| Application: | Western Blotting (WB), ELISA, Immunofluorescence (IF) |

Product Details

| | |
|---------------|---|
| Immunogen: | The antiserum was produced against synthesized peptide derived from human LTBR. |
| Isotype: | IgG |
| Specificity: | LTBR Antibody detects endogenous levels of total LTBR protein. |
| Purification: | The antibody was purified from rabbit antiserum by affinity-chromatography using immunogen. |
| Purity: | > 95 % |

Target Details

| | |
|-------------------|---|
| Target: | LTBR |
| Alternative Name: | LTBR (LTBR Products) |
| Background: | Synonyms: Tumor necrosis factor receptor superfamily member 3, Lymphotoxin-beta receptor, |

Target Details

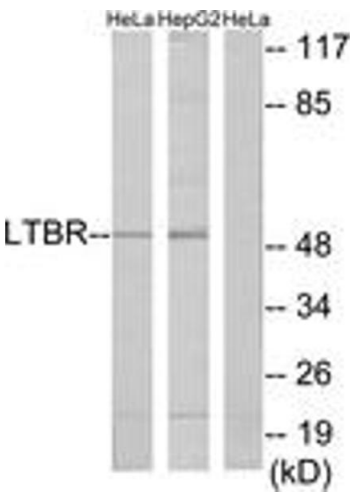
| | |
|-------------------|---|
| | Tumor necrosis factor receptor 2-related protein, Tumor necrosis factor C receptor, LTBR, D12S370, TNFCR, TNFRSF3 NCBI Gene Symbol: LTBR |
| Molecular Weight: | 46 kDa |
| Gene ID: | 4055 |
| OMIM: | 600979 |
| UniProt: | P36941 |
| Pathways: | NF-kappaB Signaling |

Application Details

| | |
|--------------------|--|
| Application Notes: | WB: 1:500~1:1000 IF: 1:100~1:500 ELISA: 1:40000 |
| Comment: | Unigene-Number: Hs.1116 (NCBI Gene Symbol: LTBR) |
| Restrictions: | For Research Use only |

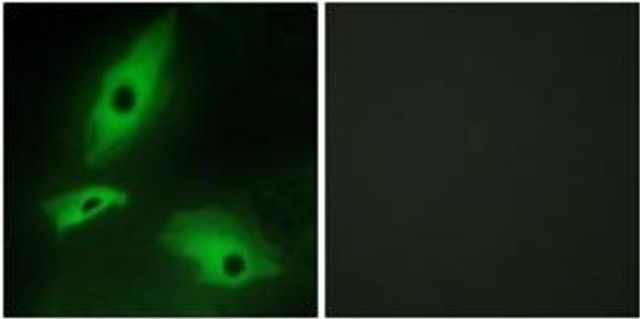
Handling

| | |
|--------------------|--|
| Format: | Liquid |
| Concentration: | 1 mg/mL |
| Buffer: | phosphate buffered saline (without Mg2+ and Ca2+), pH 7.4, 150 mM NaCl, 0.02 % sodium azide and 50 % glycerol. |
| Preservative: | Sodium azide |
| Precaution of Use: | This product contains sodium azide: a POISONOUS AND HAZARDOUS SUBSTANCE which should be handled by trained staff only. |
| Storage: | -20 °C |
| Storage Comment: | Stable at -20°C for at least 1 year. |
| Expiry Date: | 12 months |



Western Blotting

Image 1. Western blot analysis of extracts from HeLa/HepG2 cells, using LTBR Antibody. The lane on the right is treated with the synthesized peptide.



Immunofluorescence

Image 2. Immunofluorescence analysis of HeLa cells, using LTBR Antibody. The picture on the right is treated with the synthesized peptide.