

Datasheet for ABIN1533718
anti-ACVRL1 antibody (AA 196-245)[Go to Product page](#)

3 Images

Overview

Quantity:	100 µg
Target:	ACVRL1
Binding Specificity:	AA 196-245
Reactivity:	Human, Mouse, Rat
Host:	Rabbit
Clonality:	Polyclonal
Application:	Western Blotting (WB), ELISA, Immunohistochemistry (IHC), Immunofluorescence (IF)

Product Details

Immunogen:	The antiserum was produced against synthesized peptide derived from human ACVL1.
Isotype:	IgG
Specificity:	ACVL1 Antibody detects endogenous levels of total ACVL1 protein.
Purification:	The antibody was purified from rabbit antiserum by affinity-chromatography using immunogen.
Purity:	> 95 %

Target Details

Target:	ACVRL1
Abstract:	ACVRL1 Products
Background:	Synonyms: ACVL1, ACVRL1, ACVRLK1, ALK-1, Activin receptor-like kinase 1, SKR3, TGF-B superfamily receptor type I, TSR-I, kinase ALK1

Target Details

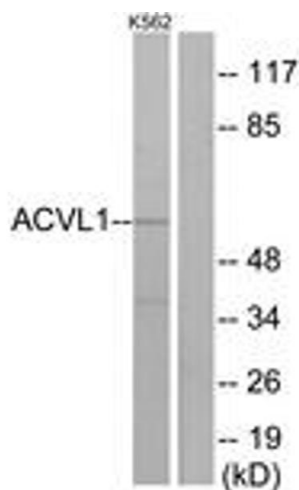
	NCBI Gene Symbol: ACVRL1
Molecular Weight:	56 kDa
Gene ID:	94
OMIM:	600376
UniProt:	P37023

Application Details

Application Notes:	WB: 1:500~1:1000 IHC: 1:50~1:100 IF: 1:100~1:500 ELISA: 1:20000
Comment:	Unigene-Number: Hs.591026 (NCBI Gene Symbol: ACVRL1)
Restrictions:	For Research Use only

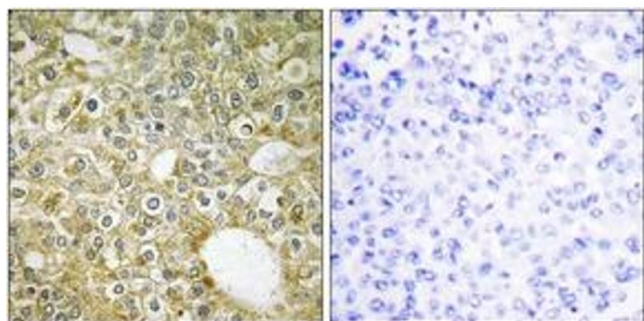
Handling

Format:	Liquid
Concentration:	1 mg/mL
Buffer:	phosphate buffered saline (without Mg ²⁺ and Ca ²⁺), pH 7.4, 150 mM NaCl, 0.02 % sodium azide and 50 % glycerol.
Preservative:	Sodium azide
Precaution of Use:	This product contains sodium azide: a POISONOUS AND HAZARDOUS SUBSTANCE which should be handled by trained staff only.
Storage:	-20 °C
Storage Comment:	Stable at -20°C for at least 1 year.
Expiry Date:	12 months



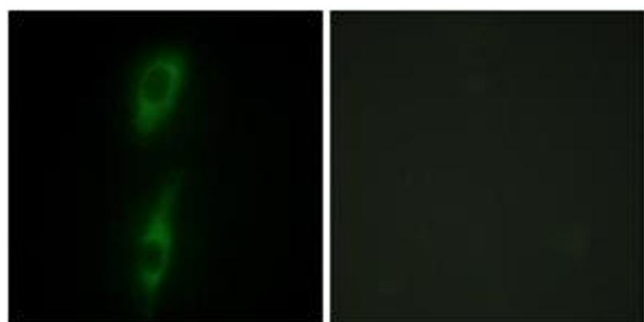
Western Blotting

Image 1. Western blot analysis of extracts from K562 cells, using ACVL1 Antibody. The lane on the right is treated with the synthesized peptide.



Immunohistochemistry

Image 2. Immunohistochemistry analysis of paraffin-embedded human breast carcinoma tissue, using ACVL1 Antibody. The picture on the right is treated with the synthesized peptide.



Immunofluorescence

Image 3. Immunofluorescence analysis of HeLa cells, using ACVL1 Antibody. The picture on the right is treated with the synthesized peptide.