



[Go to Product page](#)

Datasheet for ABIN1533727  
**anti-NBL1 antibody (AA 131-180)**

3 Images

Overview

Quantity:	100 µg
Target:	NBL1
Binding Specificity:	AA 131-180
Reactivity:	Human
Host:	Rabbit
Clonality:	Polyclonal
Conjugate:	This NBL1 antibody is un-conjugated
Application:	Western Blotting (WB), ELISA, Immunohistochemistry (IHC), Immunofluorescence (IF)

Product Details

Immunogen:	The antiserum was produced against synthesized peptide derived from human NBL1.
Isotype:	IgG
Specificity:	NBL1 Antibody detects endogenous levels of total NBL1 protein.
Purification:	The antibody was purified from rabbit antiserum by affinity-chromatography using immunogen.
Purity:	> 95 %

Target Details

Target:	NBL1
Alternative Name:	NBL1 ( <a href="#">NBL1 Products</a> )
Background:	Synonyms: Neuroblastoma suppressor of tumorigenicity 1, Zinc finger protein DAN, N03, DAN

## Target Details

---

domain family member 1, NBL1, DAN, DAND1

NCBI Gene Symbol: NBL1

---

Molecular Weight: 19 kDa

---

Gene ID: 4681

---

OMIM: 600613

---

UniProt: [P41271](#)

---

## Application Details

---

Application Notes: WB: 1:500~1:1000 IHC: 1:50~1:100 IF: 1:100~1:500 ELISA: 1:20000

---

Comment: Unigene-Number: Hs.654502 (NCBI Gene Symbol: NBL1)

---

Restrictions: For Research Use only

---

## Handling

---

Format: Liquid

---

Concentration: 1 mg/mL

---

Buffer: phosphate buffered saline (without Mg<sup>2+</sup> and Ca<sup>2+</sup>), pH 7.4, 150 mM NaCl, 0.02 % sodium azide and 50 % glycerol.

---

Preservative: Sodium azide

---

Precaution of Use: This product contains sodium azide: a POISONOUS AND HAZARDOUS SUBSTANCE which should be handled by trained staff only.

---

Storage: -20 °C

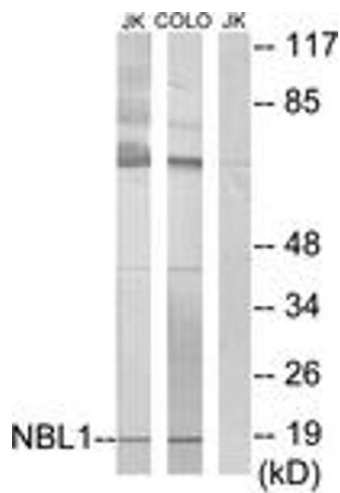
---

Storage Comment: Stable at -20°C for at least 1 year.

---

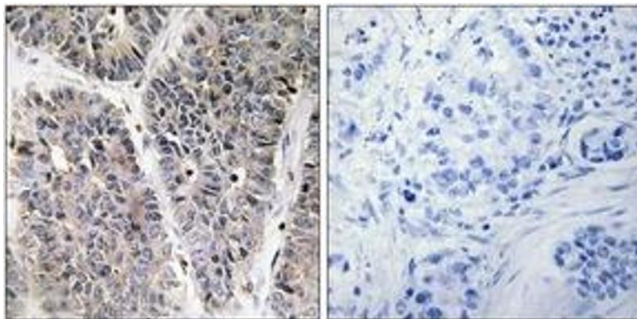
Expiry Date: 12 months

---



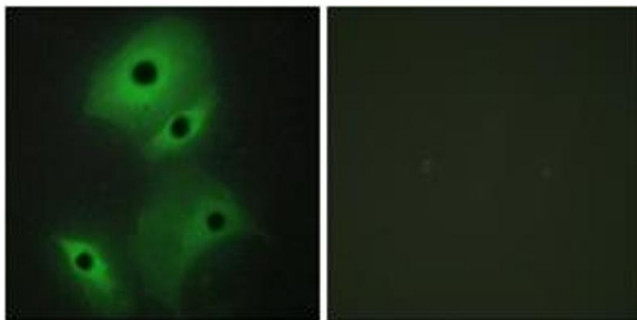
### Western Blotting

**Image 1.** Western blot analysis of extracts from Jurkat/COLO cells, using NBL1 Antibody. The lane on the right is treated with the synthesized peptide.



### Immunohistochemistry

**Image 2.** Immunohistochemistry analysis of paraffin-embedded human lung carcinoma tissue, using NBL1 Antibody. The picture on the right is treated with the synthesized peptide.



### Immunofluorescence

**Image 3.** Immunofluorescence analysis of HeLa cells, using NBL1 Antibody. The picture on the right is treated with the synthesized peptide.