



[Go to Product page](#)

Datasheet for ABIN1533731  
**anti-FRK antibody (AA 71-120)**

3 Images

### Overview

Quantity:	100 µg
Target:	FRK
Binding Specificity:	AA 71-120
Reactivity:	Human, Mouse, Rat
Host:	Rabbit
Clonality:	Polyclonal
Conjugate:	This FRK antibody is un-conjugated
Application:	Western Blotting (WB), ELISA, Immunohistochemistry (IHC), Immunofluorescence (IF)

### Product Details

Immunogen:	The antiserum was produced against synthesized peptide derived from human FRK.
Isotype:	IgG
Specificity:	FRK Antibody detects endogenous levels of total FRK protein.
Purification:	The antibody was purified from rabbit antiserum by affinity-chromatography using immunogen.
Purity:	> 95 %

### Target Details

Target:	FRK
Alternative Name:	FRK ( <a href="#">FRK Products</a> )
Background:	Synonyms: Nuclear tyrosine protein kinase RAK, Tyrosine-protein kinase FRK, fyn-related kinase

## Target Details

---

NCBI Gene Symbol: FRK

Molecular Weight: 58 kDa

Gene ID: 2444

OMIM: 606573

UniProt: [P42685](#)

## Application Details

---

Application Notes: WB: 1:500~1:1000 IHC: 1:50~1:100 IF: 1:100~1:500 ELISA: 1:1000

Comment: Unigene-Number: Hs.89426 (NCBI Gene Symbol: FRK)

Restrictions: For Research Use only

## Handling

---

Format: Liquid

Concentration: 1 mg/mL

Buffer: phosphate buffered saline (without Mg<sup>2+</sup> and Ca<sup>2+</sup>), pH 7.4, 150 mM NaCl, 0.02 % sodium azide and 50 % glycerol.

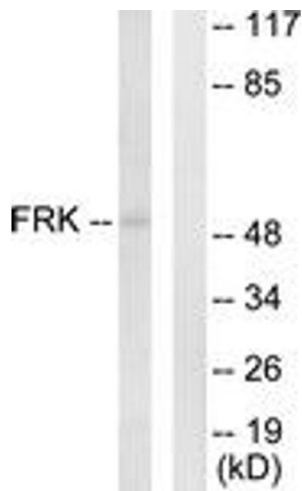
Preservative: Sodium azide

Precaution of Use: This product contains sodium azide: a POISONOUS AND HAZARDOUS SUBSTANCE which should be handled by trained staff only.

Storage: -20 °C

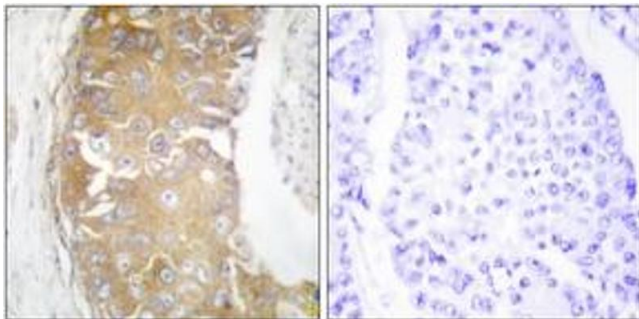
Storage Comment: Stable at -20°C for at least 1 year.

Expiry Date: 12 months



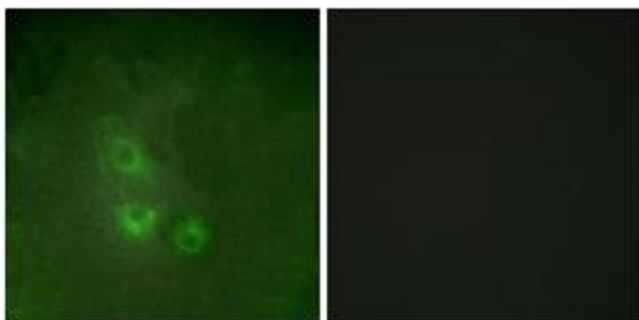
### Western Blotting

**Image 1.** Western blot analysis of extracts from Jurkat cells, using FRK Antibody. The lane on the right is treated with the synthesized peptide.



### Immunohistochemistry

**Image 2.** Immunohistochemistry analysis of paraffin-embedded human breast carcinoma tissue, using FRK Antibody. The picture on the right is treated with the synthesized peptide.



### Immunofluorescence

**Image 3.** Immunofluorescence analysis of HuvEc cells, using FRK Antibody. The picture on the right is treated with the synthesized peptide.