



[Go to Product page](#)

Datasheet for ABIN1533748
anti-CLK1 antibody (AA 101-150)

2 Images

Overview

Quantity:	100 µg
Target:	CLK1
Binding Specificity:	AA 101-150
Reactivity:	Human, Mouse
Host:	Rabbit
Clonality:	Polyclonal
Conjugate:	This CLK1 antibody is un-conjugated
Application:	Western Blotting (WB), ELISA, Immunofluorescence (IF)

Product Details

Immunogen:	The antiserum was produced against synthesized peptide derived from human CLK1.
Isotype:	IgG
Specificity:	CLK1 Antibody detects endogenous levels of total CLK1 protein.
Purification:	The antibody was purified from rabbit antiserum by affinity-chromatography using immunogen.
Purity:	> 95 %

Target Details

Target:	CLK1
Alternative Name:	CLK1 (CLK1 Products)
Background:	Synonyms: CDC like kinase 1, CLK, CLK1, Dual specificity protein kinase CLK1,

Target Details

NCBI Gene Symbol: CLK1

Molecular Weight: 57 kDa

Gene ID: 1195

OMIM: 601951

UniProt: [P49759](#)

Application Details

Application Notes: WB: 1:500~1:1000 IF: 1:100~1:500 ELISA: 1:1000

Comment: Unigene-Number: Hs.433732 (NCBI Gene Symbol: CLK1)

Restrictions: For Research Use only

Handling

Format: Liquid

Concentration: 1 mg/mL

Buffer: phosphate buffered saline (without Mg²⁺ and Ca²⁺), pH 7.4, 150 mM NaCl, 0.02 % sodium azide and 50 % glycerol.

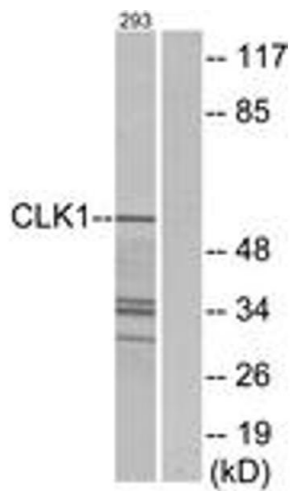
Preservative: Sodium azide

Precaution of Use: This product contains sodium azide: a POISONOUS AND HAZARDOUS SUBSTANCE which should be handled by trained staff only.

Storage: -20 °C

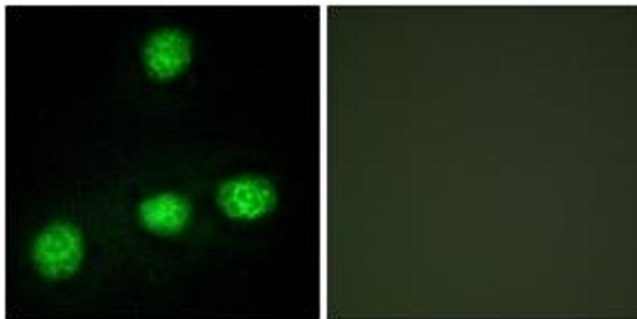
Storage Comment: Stable at -20°C for at least 1 year.

Expiry Date: 12 months



Western Blotting

Image 1. Western blot analysis of extracts from 293 cells, using CLK1 Antibody. The lane on the right is treated with the synthesized peptide.



Immunofluorescence

Image 2. Immunofluorescence analysis of HuvEc cells, using CLK1 Antibody. The picture on the right is treated with the synthesized peptide.